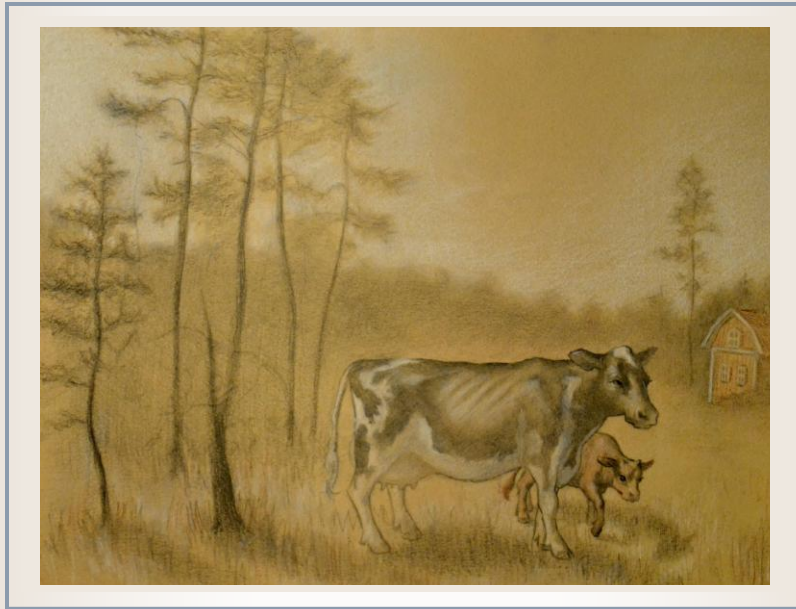


# COOL FORAGES



ADVANCED MANAGEMENT OF TEMPERATE FORAGES



REFERENCES

# COOL FORAGES - Advanced management of temperate forages

## Table of Contents

<b>ECOSYSTEM SERVICES</b> .....	<b>4</b>
Chapter 1: Ecosystem Services from Forages - Alan J. Franzluebbbers (Page 2) .....	4
Chapter 2: Opportunities and Challenges in Growing Perennial Forage in Important Wildlife Areas — Lessons Learned in Delta, BC - Markus Merkens and David Bradbeer (Page 7) .....	4
Chapter 3: Cover Crop Strategies for Annual and Perennial Forages - Yvonne Lawley (Page 12) .....	6
Chapter 4: Growing Perennial Forages for Biomass - Matt A. Sanderson and Igathinathane Cannayen (Page 17) .....	6
<b>GROWTH OF FORAGE</b> .....	<b>7</b>
Chapter 5: How Grasses Grow - Shabtai Bittman (Page 24) .....	7
Chapter 6: How Grasses Respond to Drought—A Model - Shabtai Bittman and Derek Hunt (Page 27).....	7
Chapter 7: Endophytes—Good and Bad - Charles P. West (Page 31) .....	7
Chapter 8: Foraging Nematodes—Hidden Enemies of Forage Production - Tom Forge (Page 36) .....	8
<b>FORAGE DIVERSITY</b> .....	<b>11</b>
Chapter 9: Biodiversity in Forage Stands - Matt A. Sanderson, Sarah Goslee and Kathy Soder (Page 42).....	11
Chapter 10: Grass-legume Mixtures: A Valuable Resource for Grassland Based Milk Production - Beat Reidy and Peter Thomet (Page 46) .....	11
Chapter 11: Pasture Naturalization - Yousef A. Papadopoulos, John Duynisveld, Michel S. McElroy, Sherry A.E. Fillmore and Alan Fredeen (Page 50) .....	12
Chapter 12: Intra-Specific Competition and Self-Thinning in Orchardgrass - Shabtai Bittman and Derek Hunt (Page 54) .....	13
Chapter 13: Shifts in Pasture Communities Due to Nutrient Imbalances in the Aspen Parkland - Shabtai Bittman, Derek Hunt, Duane McCartney, John Waddington and Wes Nuttall (Page 56).....	13
Chapter 14: The Value of Pasture Weeds - Shabtai Bittman, Duane McCartney, Derek Hunt and John Waddington (Page 58) .....	14
<b>BREEDING NEW FORAGE VARIETIES</b> .....	<b>14</b>
Chapter 15: Breeding for Increased Forage Quality - Michael D. Casler (Page 60) .....	14
Chapter 16: Increasing Winter Hardiness in Alfalfa - Annick Bertrand and Yves Castonguay (Page 64) .....	14
Chapter 17: Persistence of Alfalfa Genotypes in Mixed Stands - Shabtai Bittman, Duane McCartney and Derek Hunt (Page 68) .....	15
Chapter 18: Benefits and Risks of Adapting Genetically-Engineered Crops: The Roundup Ready Alfalfa Story - Daniel H. Putnam and Steve B. Orloff (Page 71) .....	15
Chapter 19: Creating Dedicated Bioenergy Crops - Michael D. Casler (Page 77) .....	16
<b>SOIL NUTRIENTS</b> .....	<b>17</b>
Chapter 20: Benefits of Perennial Forages in Rotations - Bill Jokela and Michael Russelle (Page 84).....	17
Chapter 21: Nutrient Losses from Forage Stands in the Non-Growing Season - Martin Chantigny, Marja Maljanen, Perttu Virkajärvi and Mats Öquist (Page 88) .....	20
Chapter 22: Real-time Simulation Models—A Novel Tool for Farm Nitrogen Management - Derek Hunt, Shabtai Bittman and Ron Fretwell (Page 92) .....	21
Chapter 23: Managing Phosphorus - C. Grant Kowalenko (Page 96) .....	22
Chapter 24: Sulphur Deficiency Uncovered: British Columbia Experience - C. Grant Kowalenko (Page 101) .....	23
Chapter 25: How to Improve Nutrient Efficiency of Whole Dairy Farms - Shabtai Bittman, Derek Hunt, Mary Lou Swift, Michael Casler, Dan Undersander and Yousef Papadopoulos (Page 104) .....	24
<b>MANAGING WASTE</b> .....	<b>24</b>
Chapter 26: Slurry Application on Grass - Stan T.J. Lalor (Page 110).....	24
Chapter 27: Developing a Shallow Injection Tine for Slurry Application Into Grasslands - Lena Rodhe (Page 116) .....	25
Chapter 28: Manure Analysis: A Strategy for Improved Nutrient Management and Sustainable Crop Production - Ken A. Smith and David R. Chadwick (Page 120) .....	25

Chapter 29: Can Slurry Manure Replace Commercial Fertilizer? - Derek Hunt, Shabtai Bittman and C. Grant Kowalenko (Page 125) .....	26
Chapter 30: Grass Height Affects Emission of Ammonia from Applied Broiler Manure - Shabtai Bittman, Derek Hunt, Anthony K. Lau and C. Grant Kowalenko (Page 134) .....	27
Chapter 31: Aerating Grassland Prior to Manure Application Reduces Runoff and Nutrient Loads - Derek Hunt, Shabtai Bittman, C. Grant Kowalenko and Laurens J.P. van Vliet (Page 135) .....	27
Chapter 32: Long Term Effects of Manure - Derek Hunt, Shabtai Bittman, C. Grant Kowalenko, Tom Forge, Cynthia Grant, Eugene Gowalko and Dave Raworth (Page 136) .....	28
Chapter 33: Manure on Alfalfa - Michael Russelle and Bill Jokela (Page 144).....	28
Chapter 34: Is Manure Application on Alfalfa a Good Idea? Ontario Experience - Bonnie Ball and Christine Brown (Page 148) .....	31
Chapter 35: Manure Concerns—Pathogens, Antibiotics, and Other Chemicals - Michael Russelle (Page 150).....	31
Chapter 36: Fertilizing Grass with Municipal Biosolids - Dan M. Sullivan (Page 152).....	33
<b>FORAGE QUALITY &amp; FEEDING.....</b>	<b>34</b>
Chapter 37: Best Tools for Predicting Forage Harvest Timing to Optimize Yield and Nutritive Value - R. Mark Sulc (Page 160) .....	34
Chapter 38: About Tillers, Maturity and Forage Quality - Shabtai Bittman, Derek Hunt and Mary Lou Swift (Page 164) .....	35
Chapter 39: The Conundrum of Forage Fiber in Dairy Rations - Peter H. Robinson (Page 167) .....	35
Chapter 40: Forages for Cows in the Transition Period - Gaëtan F. Tremblay, Gilles Bélanger, Sophie Pelletier, Edith Charbonneau, Masahito Oba, Doris Pellerin and Guy Allard (Page 171).....	36
Chapter 41: Lower DCAD Values in a Tall Fescue Variety Selected for Low Grass Tetany - Derek Hunt, Shabtai Bittman and Mary Lou Swift (Page 175) .....	37
Chapter 42: Taking Advantage of Diurnal Shifts in the Nutritive Value of Forages - Robert Berthiaume, Gaëtan F. Tremblay, Gilles Bélanger, Carole Lafrenière, Annick Bertrand, Yves Castonguay, Réal Michaud and Guy Allard (Page 176).....	37
Chapter 43: Increasing Non-Structural Carbohydrates in Forages - Gilles Bélanger, Gaëtan F. Tremblay, Robert Berthiaume, Annick Bertrand, Yves Castonguay, Réal Michaud and Guy Allard (Page 180) .....	38
Chapter 44: Pasture Bloat in Ruminants: Cause, Occurrence and Mitigation Strategies - Tim A. McAllister, Yuxi Wang, Walter Majak and Surya Acharya (Page 184) .....	39
Chapter 45: Extending the Grazing Season: Swath Grazing by Beef Cows - Duane McCartney and Vern Baron (Page 189) .....	41
Chapter 46: Extending the Grazing Season: Stockpile Grazing of Perennial Forages - Duane McCartney and Vern Baron (Page 192).....	41
Chapter 47: Stockpiling Tall Fescue for Winter Grazing by Beef Cows in Interior BC - Don Thompson and Doug Veira (Page 195) .....	41
Chapter 48: Non-confined Winter Feeding in Frozen Regions: Benefits and Risks - Kim Ominski, Gwen Donohoe and Don Flaten (Page 197) .....	42
Chapter 49: Reducing Greenhouse Gases from Ruminants on Perennial Pastures - Alan Iwaasa and Reynald Lemke (Page 201).....	43
Chapter 50: High Forage Diets Improve Quality of Beef for Consumers - Priya Mir (page 205) .....	44

## **ECOSYSTEM SERVICES**

### **Chapter 1: Ecosystem Services from Forages - Alan J. Franzluebbers (Page 2)**

- Arshad M.A., Franzluebbers A.J. and Azooz R.H. 2004. Surface-soil structural properties under grass and cereal production on a Mollic Cryoboralf in Canada. *Soil and Tillage Research* 77, 15-23.
- Franzluebbers A.J. 2008. Linking soil and water quality in conservation agricultural systems. *Journal of Integrative Biosciences* 6, 15-29.
- Franzluebbers A.J. 2010. Achieving soil organic carbon sequestration with conservation agricultural systems in the southeastern United States. *Soil Science Society of America Journal* 74, 347-357.
- Harper L.A., Denmead O.T., Freney J.R. and Byers F.M. 1999. Direct measurements of methane emissions from grazing and feedlot cattle. *Journal of Animal Science* 77, 1392-1401.
- Jenny H. 1941. *Factors of soil formation*. McGraw-Hill, New York.
- Johnson J.M.F., Franzluebbers A.J., Lachnicht Weyers S. and Reicosky D.C. 2007. Agricultural opportunities to mitigate greenhouse gas emissions. *Environmental Pollution* 150, 107-124.
- Liebig M.A., Gross J.R., Kronberg S.L., Phillips R.L. and Hanson J.D. 2010. Grazing management contributions to net global warming potential: A long-term evaluation in the northern Great Plains. *Journal of Environmental Quality* 39, 799-809.
- Millennium Ecosystem Assessment. 2005. *Ecosystems and human well-being: Synthesis*. Island Press, Washington, DC.
- USDA-NASS. 1997. *Census of agriculture, Vol. 1, Geographic area series, USDA National Agricultural Statistics Service, Washington, DC. CD-ROM*.

### **Chapter 2: Opportunities and Challenges in Growing Perennial Forage in Important Wildlife Areas — Lessons Learned in Delta, BC - Markus Merkens and David Bradbeer (Page 7)**

- Bradbeer D.R. 2007. Lesser snow geese and agricultural habitat use on the Fraser River delta. M.Sc. thesis, University of British Columbia, British Columbia. 98 pp.
- Bradbeer D.R. and Halpin L.R. 2010. Managing cereal grasses as waterfowl lure crops: investigating planting dates and waterfowl feeding ecology. Unpublished report 23 pp.–
- Breault A.M. and Butler R.W. 1992. Abundance, distribution and habitat requirements of American wigeons, northern pintails and mallards in farmlands, in Butler, R.W (Ed.), *Abundance, distribution and conservation of birds in the vicinity of Boundary Bay, British Columbia*. Tech. Report Ser. 155. Canadian Wildlife Service, Pacific and Yukon Region, British Columbia. 132 pp.
- Brennan L.A. and Kuvlesky W.P., Jr. 2005. North American grassland birds: an unfolding conservation crisis? *Journal of Wildlife Management* 69:1-13.
- Butler R.W. and Campbell R.W. 1987. The birds of the Fraser River delta: populations, ecology and international significance. Occasional Paper Number 65, Canadian Wildlife Service, Delta, BC, Canada
- Dahl T.E. 1990. *Wetland losses in the United States: 1780s to 1980s*. Fish and Wildlife Service, U.S. Department of the Interior, Washington DC.

- Donald P.F., Sanderson F.J., Burfield I.J. and van Bommel F.P.J. 2006. Further evidence of continent-wide impacts of agricultural intensification on European farmland birds, 1990-2000. *Agriculture, Ecosystems and the Environment* 116:189-196.
- Durrant D., Fritz H. and Duncan P. 2004. Feeding patch selection by herbivorous Anatidae: the influence of body size, and of plant quantity and quality. *J. Avian Biol.* 35, 144-152.
- Hassal M. and Lane S.J. 2001. Effects of varying rates of autumn fertilizer applications to pastures in eastern England on feeding sites selection by brent geese *Branta b. bernicla*. *Agric. Ecosyst. Environ.* 86, 203-209.
- Herkert J.R., Simpson S.A., Westemeier R.L., Esker T.L. and Walk J.F. 1999. Response of Northern Harriers and Short-eared Owls to grassland management in Illinois. *Journal of Wildlife Management* 63:517-523.
- Hermawan B. and Bomke A.A. 1996. Aggregation of a degraded lowland soil during restoration with different cropping and drainage regimes. *Soil Technology* 9:239-250.
- Hirst S.M. and Easthope C.A. 1981. Use of agricultural lands by waterfowl in southwestern British Columbia. *J. Wildl. Manage.* 45, 454-462.
- Lovvorn J.R., and Baldwin J.R. 1996. Intertidal and farmland habitats of ducks in the Puget Sound region: a landscape perspective. *Biol. Conserv.* 77, 97-114.
- Lynch-Stewart P. 1983. *Land Use Change on Wetlands in Southern Canada: Review and Bibliography*. Lands Directorate, Environment Canada, Working paper No. 26.
- Magdoff F. and van Es H. 2009. *Building Soils for Better Crops - Sustainable Soil Management*. 3<sup>rd</sup> Ed. Sustainable Agriculture Research and Education (SARE) Program
- Mayhew P. and Houston D. 1989. Feeding site selection by wigeon, *Anas penelope*, in relation to water. *Ibis* 131:1-8.
- Merkens M. 2005. Value of Grassland Set-asides in Increasing Farmland Habitat Capacity for Wintering Raptors in the Lower Fraser River Delta. In: T.D. Hooper, editor. *Proceedings of the Species at Risk 2004 Pathways to Recovery Conference*. 1 March 2-6, 2004, Victoria, B.C. Species at Risk 2004 Pathways to Recovery Conference Organizing Committee, Victoria, B.C.
- Merkens M., Bradbeer D.R. and Bishop C.A. 2012. Landscape and field characteristics affecting winter waterfowl grazing damage to agricultural perennial forage crops on the lower Fraser River delta, BC, Canada. *Crop Protection*. *In press*.
- Moore K.E. 1990. Urbanization in the Lower Fraser Valley, 1980-1987. Technical report series No.120, Canadian Wildlife Service.
- Murphy M.T. 2003. Avian population trends within the evolving agricultural landscape of eastern and central United States. *The Auk* 120:20-34. Butler and Campbell 1987.
- North M.E.A. and Teversham J.M. 1984. The vegetation of the floodplains of the Lower Fraser, Serpentine and Nicomekl Rivers, 1859 to 1890. *Syesis* 17: 47-66 + loose map. Fraser
- Sedinger J.S. 1997. Adaptations and consequences of a herbivorous diet in grouse and waterfowl. *Condor* 99, 314-326.
- Vickery J.A. and Gill J.A. 1999. Managing grassland for wild geese in Britain: a review. *Biol. Conserv.* 89, 93-106.

Wiel R.R., Lowell K.A. and Shade H.M. 1993. Effects of intensity of agronomic practices on a soil ecosystem. *American Journal of Alternative Agriculture* 8:5-14.

With K.A., King A.W. and Jensen W.E. 2008. Remaining large grasslands may not be sufficient to prevent grassland bird declines. *Biological Conservation* 141:3152-3167.

Zbeetnoff D.M. and McTavish R.B. 2004. BC wildlife damage compensation pilot projects: evaluation report. Zbeetnoff Agro-Environmental Consulting, BC and McTavish Resource & Management Consultants Ltd., BC. Last accessed September 14.  
<[http://poli.ucalgary.ca/wildlifestewardship/system/files/images/AEI\\_Zbeetnoff\\_McTavish\\_Final\\_November\\_12-2004.pdf](http://poli.ucalgary.ca/wildlifestewardship/system/files/images/AEI_Zbeetnoff_McTavish_Final_November_12-2004.pdf)>

### **Chapter 3: Cover Crop Strategies for Annual and Perennial Forages - Yvonne Lawley (Page 12)**

#### **Cover Crop Resources:**

Cover Crop Chart. USDA ARS publication available as a free PDF at <http://www.ars.usda.gov/Main/docs.htm?docid=20323>

Managing cover crop profitably. A book published by SARE and available as a free PDF at <http://www.sare.org/Learning-Center/Books/Managing-Cover-Crops-Profitably-3rd-Edition>

Midwest Cover Crops Council website. <http://www.mccc.msu.edu/index.htm>

UC SAREP Cover crop data base. [http://www.sarep.ucdavis.edu/ccrop/search\\_ccrop.html](http://www.sarep.ucdavis.edu/ccrop/search_ccrop.html)

Canadian Organic Growers Organic Field Crop Handbook.

### **Chapter 4: Growing Perennial Forages for Biomass - Matt A. Sanderson and Igathinathane Cannayen (Page 17)**

Berdahl J.D., Frank A.B., Krupinsky J.M., Carr, P.M., Hanson J.D., and Johnson H.A. 2005. Biomass yield, phenology, and survival of diverse switchgrass cultivars and experimental strains in western North Dakota. *Agronomy Journal* 97: 549-555.

Casler M.D. Vogel K.P., Taliaferro C.M., Elhke N.J., Berdahl J.D., Brummer E.C., Kallenbach R.O., West C.P., and Mitchell R.B. 2007. Latitudinal and longitudinal adaptation of switchgrass populations. *Crop Science* 47: 2249-2259.

Hallam A., Anderson I.C. and Buxton D.R. 2001. Comparative economic analysis of perennial, annual, and intercrops for biomass production. *Biomass and Bioenergy* 21:407-424.

Heaton E.A., Dohelman F.G. and Long S.P. 2008. Meeting US biofuel goals with less land: the potential of *Miscanthus*. *Global Change Biology* 14:2000-2014.

Jannasch R., Duxbury P. and Samson R. 2001. Development of bioenergy feedstocks :Agronomy data from eastern Canada. In : Final report for Resource efficient agricultural production (REAP)—Canada, Ste. Anne de Bellvue, Quebec.

Jefferson, P.G., McCaughey W.P., May, K., Woosaree J., MacFarlane L. and Wright S.M.B. 2002. Performance of American native grass cultivars in the Canadian prairie provinces. *Native Plants Journal* 3:24-33.

Lemus R., Brummer E.C., Moore K.J., Molstad N.E., Burras C.L. and Barker M.F. 2002. Biomass yield and quality of 20 switchgrass populations in southern Iowa, USA. *Biomass and Bioenergy* 23: 433-442.

Liebig M.L., Johnson H.A., Hanson J.D. and Frank A.B. 2005. Soil carbon under switchgrass stands and cropland. *Biomass and Bioenergy* 28:347-354.

Madakadze I.C., Stewart K., Peterson P.R., Coulman B.E., Samson R., and Smith D.L. 1999. Switchgrass biomass and chemical composition for biofuel in Eastern Canada. *Agronomy Journal* 91: 696-701.

## **GROWTH OF FORAGE**

### **Chapter 5: How Grasses Grow - Shabtai Bittman (Page 24)**

Ball D.M., Hoveland C.S. and Lacefield G.D. 1991. *Southern Forages*. Potash and Phosphate Institute and Foundation for Agronomic Research, Norcross, GA, USA.

Langer, R.H.M. 1972. *How Grasses Grow*. Edward Arnold (Publishers) Ltd., London.

### **Chapter 6: How Grasses Respond to Drought—A Model - Shabtai Bittman and Derek Hunt (Page 27)**

Bittman S. 1985. Physiological and agronomic responses to drought of three forage grasses: Crested wheatgrass, smooth bromegrass and Altai wildrye. Ph.D. diss. Univ. Saskatchewan, Saskatoon, SK.

Bittman S. and Simpson G.M. 1989. Drought effect on leaf conductance and leaf rolling in forage grasses. *Crop Sci.* 29:338-344.

Bittman S., Simpson G.M. and Mir Z. 1988. Leaf senescence and seasonal decline in forage quality of three temperate grasses as influenced by drought. *Crop Sci.* 28:546-552.

Frank A.B., Bittman S., Johnson D.A. *Water Relations of Cool Season Grasses*. In: *Cool-Season Forage Grasses*, Agronomy Monograph no. 34. 1996. American Society of Agronomy, Crop Science Society of America, Soil Science Society of America, 677 S. Segoe Rd., Madison, WI 53711, USA. Pp 127-164.

Tadmor N.H., Evenari M. and Shahan L. 1970. Runoff farming in the desert. IV. Survival and yields of perennial range plots. *Agron. J.* 62:695-699.

### **Chapter 7: Endophytes—Good and Bad - Charles P. West (Page 31)**

Andrae J.A. and Roberts C.A. 2007. Transferring endophyte technology to North American farmers. p. 233-237. In *Proc. 6th International symposium on fungal endophytes of grasses*. Christchurch, NZ.

Bouton J.H. and Easton S. 2005. Endophyte in forage cultivars. p. 327-340. In C.A. Roberts et al. (ed.) *Neotyphodium in cool-season grasses*. Blackwell Publ., Ames, IA.

Elmi A.A., West C.P., Robbins R.T. and Kirkpatrick T.L. 2000. Endophyte effects on reproduction of a root-knot nematode (*Meloidogyne marylandi*) and osmotic adjustment in tall fescue. *Grass Forage Sci.* 55:166-172.

Fletcher L.R. 2005. Managing ryegrass-endophyte toxicoses. p. 229-242. In C.A. Roberts, C.P. West, and D.E. Spiers (ed.) *Neotyphodium in cool-season grasses*. Blackwell Publ., Ames, IA.

Hoveland C.S. 1993. Importance and economic significance of *Acremonium* endophytes on performance of animals and grass plant. *Agric. Ecosyst. Environ.* 44:3-12.

- Hoveland C.S. 2009. Origin and history. p. 3-10. In H.A. Fribourg, D.B. Hannaway, and C.P. West (ed.) Tall fescue for the twenty-first century. Agron. Monogr. 53. ASA, CSSA, and SSSA, Madison, WI.
- Mahmood T., Gergerich R.C., Milus E.A., West C.P. and D'Arcy C.J. 1993. Incidence of barley yellow dwarf viruses in wheat, endophyte-infected and endophyte-free tall fescue, and other hosts in Arkansas. Plant Disease 77:225-228.
- Popay, Alison J. 2009. Insect pests. p. 129-149. In H.A. Fribourg, D.B. Hannaway, and C.P. West (eds.) Tall fescue for the twenty-first century. Agronomy Monograph 53. ASA, CSSA, SSSA, Madison, WI.
- Prestidge R.A. and Gallagher R.T. 1988. Endophyte fungus confers resistance to ryegrass: Argentine stem weevil larval studies. Ecological Entomol. 13:428-435.
- Roberts C.A., Lacefield G.D., Ball D. and Bates G. 2009. Management to optimize grazing performance in the northern hemisphere. p. 85-100. In H.A. Fribourg, D.B. Hannaway, and C.P. West (ed.) Tall fescue for the twenty-first century. Agron. Monogr. 53. ASA, CSSA, and SSSA, Madison, WI.
- Rowan D.D. and Gaynor D.L. 1986. Isolation of feeding deterrents against argentine stem weevil from ryegrass infected with the endophyte *Acremonium loliae*. J. Chem. Ecol. 12:647-658.
- Strickland J.R., Spiers D.E., Fletcher L.R., Oliver J.W. and Aiken G.E. 2009. Physiological basis of fescue toxicosis. p. 203-228. In H.A. Fribourg, D.B. Hannaway, and C.P. West (ed.) Tall fescue for the twenty-first century. Agron. Monogr. 53. ASA, CSSA, and SSSA, Madison, WI.
- Timper P. 2009. Nematodes. p. 151-156. In H.A. Fribourg, D.B. Hannaway, and C.P. West (ed.) Tall fescue in the twenty-first century. Agronomy Monograph 53. ASA, CSSA, and SSSA, Madison, WI.
- West C.P. 1994. Endophyte-infected grass physiology and drought tolerance. p. 87-99. In C.W. Bacon and J.F. White, Jr. (ed.) Biotechnology of endophytic fungi of grasses. CRC Press, Inc., Boca Raton, FL.
- West C.P. 1999. Grass endophytes. p. 161-163. In J. Weil (ed.) McGraw-Hill yearbook of science and technology 1999. McGraw-Hill, New York.
- West C.P. and Waller J.C. 2007. Forage systems for humid transition areas. p. 313-321. In R.F Barnes et al (ed.) Forages. The science of grassland agriculture. Vol. 2. 6th ed. Wiley-Blackwell Publ., Ames, IA.
- Chapter 8: Foraging Nematodes—Hidden Enemies of Forage Production - Tom Forge (Page 36)**
- Bardgett R.D., Cook R., Yeates G.W. and Denton C.S. 1999. The influence of nematodes on below-ground processes in grassland ecosystems. Plant and Soil 212: 23-33.
- Bernard E.C. and Eisenback J.D. 1997. *Meloidogyne trifoliophila* n. spp. (Nemata: Meloidogynidae) a parasite of clover from Tennessee. Journal of Nematology 29: 43-54.
- Bittman S., Kowalenko C.G., Forge T.A., Hunt D.E., Bounaix F. and Patni N.K. 2007. Agronomic effects of multi-year surface-banding of dairy slurry on grass. Bioresource Technology 98(17): 3249-3258.
- Davis L.T., Bell N.L., Watson R.N. and Rohan T.C. 2004. Host range assessment of *Helicotylenchus pseudorobustus* (Tylenchida: Haplolaimidae) on pasture species. Journal of Nematology 36: 487-492.
- Denton C.S. et al. 1999. Low amounts of root herbivory positively influence the rhizosphere microbial community in a temperate grassland soil. Soil Biol. Biochem. 31: 155-165.



- De Deyn G.B., Raaijmakers C.E., Rik Zoomer H., Berg M.P., de Ruiter P.C., Verhoef H.A., Bezemer T.M. and van der Putten W.H. 2003. Soil invertebrate fauna enhances grassland succession and diversity. *Nature* 422: 711-713,
- Dromph K.M., Cook R., Ostle N.J. and Bardgett R.D. 2006. Root parasite induced nitrogen transfer between plants is density dependent. *Soil Biology and Biochemistry* 38: 2495-2498.
- Elkins C.B., Haaland R.L., Rodriguez-Kabana R. and Hoveland C.S. 1979. Plant-parasitic nematode effects on water use and nutrient uptake of a small- and large-rooted tall fescue genotype. *Agronomy Journal* 71: 497-500.
- Forge T.A., Bittman S. and Kowalenko C.G. 2005. Impacts of sustained use of dairy manure slurry and fertilizers on populations of *Pratylenchus penetrans* under tall fescue. 2005. *Journal of Nematology* 37: 207-213.
- Gray F.A., Griffin G.D., Johnson D.A., Eckert J.W. and Kazimir J.E. 1990. Interrelationships between *Meloidogyne hapla* and *Phytophthora megasperma* f.sp. *medicaginis* in seedling damping-off and root infection of alfalfa. *Phytopathology* 80: 228-232.
- Griffin G.D. 1992. Pathological effects of *Pratylenchus neglectus* on wheatgrasses. *Journal of Nematology* 24: 442-449.
- Griffin G.D. 1993a. Differential host response of alfalfa to *Pratylenchus penetrans* and *P. neglectus* populations. *Nematropica*, June 1993: 27-33.
- Griffin G.D. 1993b. Comparative response of alfalfa to *Pratylenchus penetrans* populations. *Journal of Nematology* 25: 461-465.
- Griffin G.D. 1994. Effect of single and interplantings on pathogenicity of *Pratylenchus penetrans* and *P. neglectus* to alfalfa and crested wheatgrass. *Journal of Nematology* 26: 460-466.
- Griffin G.D. 1998. Alfalfa. Pp. 381-397 *in*: *Plant Nematode Interactions*, Agronomy Monograph no. 36. K.R. Barker, G.A. Pederson, G.L. Windham (eds), American Society of Agronomy, Crop Science Society of America, Soil Science Society of America, Madison, WI, USA.
- Griffin G.D. and Gray F.A. 1990. Biology and pathogenicity of *Pratylenchus neglectus* on alfalfa. *Journal of Nematology* 22: 546-551.
- Hoveland, C.S. Rodriguez-Kabana R. and Berry C.D. 1975. Phalaris and tall fescue forage production as affected by nematodes in the field. *Agronomy Journal* 67: 714-717.
- Ingham R.E. and Detling J.K. 1984. Plant-herbivore interactions in a North American mixed-grass prairie. III. Soil nematode populations and root biomass in *Cynomys ludovicianus* colonies and adjacent uncolonized areas. *Oecologia* 63: 307-313.
- Ingham R.E. and Detling J.K. 1990. Effects of root-feeding nematodes on aboveground net primary production in a North American grassland. *Plant and Soil* 121: 279-281.
- Kimmons C.A., Gwinn K.D. and Bernard E.C. 1990. Nematode reproduction on endophyte-infected and endophyte-free tall fescue. *Plant Disease* 74: 757-761.
- Kimpinsk J., Christie B.R. and Choo T.M. 1992. Evaluation of red clover for nematode resistance. *Forage Notes* 36: 33-35.
- Mauza B.E. and Webster J.M. 1982. Suppression of alfalfa growth by concomitant populations of *Pratylenchus penetrans* and two *Fusarium* species. *Journal of Nematology* 14: 364-367.

- Mercer C.F. and Watson R.N. 1996. Nematode pathogens of New Zealand pastures. Pasture and forage crop pathology, American Society of Agronomy, Crop Science Society of America, and Soil Science Society of America. Madison, WI. Pp. 241-256.
- Oloff H., Hoorens B., deGoede R.G.M., van der Putten W.H. and Gleichman J.M. 2000. Small-scale shifting mosaics of two dominant grassland species: the possible role of soil-borne pathogens.
- Panaccione D.G., Kotcon J.B., Shardl C.L., Johnson R.D. and Morton J.B. 2006. Ergot alkaloids are not essential for endophytic fungus-associated population suppression of the lesion nematode, *Pratylenchus scribneri*, on perennial ryegrass. *Nematology* 8: 583-590.
- Pederson G.A. and Quesenberry K.A. 1998. Clovers and other Forage Legumes. Pp. 381-397 *in*: Plant Nematode Interactions, Agronomy Monograph no. 36. K.R. Barker, G.A. Pederson, G.L. Windham (eds), American Society of Agronomy, Crop Science Society of America, Soil Science Society of America, Madison, WI, USA.
- Santo G.S. and Pinkerton J.N. 1985. A second race of *Meloidogyne chitwoodi* discovered in Washington State. *Plant Disease* 69: 361.
- Sarathchandra S.U., Ghani A., Yeates G.W., Burch G. and Cox N.R. 2001. Effect of nitrogen and phosphate fertilisers on microbial and nematode diversity in pasture soils. *Soil Biology and Biochemistry* 33: 953-964.
- Smiley R.W., Whittaker R.G., Gourlie J.A. and Easley S.A. 2005. Suppression of wheat growth and yield by *Pratylenchus neglectus* in the Pacific Northwest. *Plant Disease* 89: 958-968.
- Stanton N.L. 1988. The underground in grasslands. *Annual Review of Ecology and Systematics* 19: 573-589.
- Suzuki M. and Willis C.B. 1974. Root lesion nematodes affect cold tolerance of alfalfa. *Canadian Journal of Plant Science* 50: 577-581.
- Thies J.A. Petersen A.D. and Barnes D.K. 1995. Host suitability of forage grasses and legumes for root-lesion nematode *Pratylenchus penetrans*. *Crop Science* 35: 1647-1651.
- Timper P., Gates R.N. and Bouton J.H. 2005. Response of *Pratylenchus* spp. in tall fescue infected with different strains of the fungal endophyte *Neotyphodium coenophialum*. *Nematology* 7: 105-110.
- Todd T.C. 1996. Effects of management practices on nematode community structure in tallgrass prairie. *Applied Soil Ecology* 3: 235-246.
- Vanstone V.A., Rathjen A.J., Ware A.H. and Wheeler R.D. 1998. Relationship between root lesion nematodes (*Pratylenchus neglectus* and *P. thornei*) and performance of wheat varieties. *Aust. J. Exp. Agric.* 38: 181-189.
- Verschoor B.C., de Goede R.G.M. and Brussard L. 2002. Do plant parasitic nematodes have differential effects on the productivity of a fast-and a slow-growing grass species? *Plant and Soil* 243: 81-90.
- West C.P., Izeke E., Oosterhuis D.M. and Robbins R.T. 1988. The effect of *Acremonium coenophialum* on the growth and nematode infestation of tall fescue. *Plant and Soil* 112: 3-6.

## FORAGE DIVERSITY

### Chapter 9: Biodiversity in Forage Stands - Matt A. Sanderson, Sarah Goslee and Kathy Soder (Page 42)

Adler P.R., Sanderson M.A., Weimer P.J. and Vogel K. 2009. Plant species composition and biofuel yields of conservation grasslands. *Ecological Applications* 19:2202-2209.

Deak A., Hall M.H., Sanderson M.A., Rotz C.A. and Corson M. 2010. Whole-farm evaluation of forage mixtures and grazing strategies. *Agronomy Journal* 102:1201-1209.

Goslee S.C. and Sanderson M.A. 2010. Landscape context and plant community composition in grazed agricultural systems of the Northeastern United States. *Landscape Ecology* 25:1029- 1039;

Lazenby A. 1981. British grasslands; past, present and future. *Grass and Forage Science* 36:243-266.

Pimentel D., Stachow U., Takacs D., Brubaker H.W., Dumas A.R., Meaney J.J., O'Neil J.A.S., Onsi D.E. and Corzilius D.B. 1992. Conserving biological diversity in agricultural/forestry ecosystems. *BioScience* 42: 354-362.

Soder K.J., Sanderson M.A., Stack J.L. and Muller L.D. 2006. Intake and performance of lactating cows grazing diverse forage mixtures. *J. Dairy Sci.* 89:2158-2167

Sanderson M.A., Soder K.J., Muller L.D., Klement K.D., Skinner R.H. and Goslee S.C. 2005. Forage mixture productivity and botanical composition in pastures grazed by dairy cattle. *Agronomy Journal* 97:1465- 1471.

Sanderson M.A., Corson M.S., Rotz C.A. and Soder K.J. 2006. Economic analysis of forage mixture productivity in pastures grazed by dairy cattle. *Forage and Grazinglands* (online [www.plantmanagementnetwork.org](http://www.plantmanagementnetwork.org)).

Stohlgren T. J., Binkley D., Chong G.W., Kalkhan M.A., Schell L.D., Bull K.A., Otsuki Y., Newman G., Bashkin M., and Son Y. 1999. Exotic plant species invade hot spots of native plant diversity. *Ecological Monographs* 69:25-46.

### Chapter 10: Grass-legume Mixtures: A Valuable Resource for Grassland Based Milk Production - Beat Reidy and Peter Thomet (Page 46)

AGFF (Swiss Grassland Society), 2000. Italienisch-Raigras-Klee-Mischungen. AGFF Merkblatt Nr. 6.

Asner G.P., Elmore A.J., Olander L.O., Martin R.E. and Harris A.T. 2004. Grazing systems, Ecosystem Responses, and Global Change. *Annual Reviews of Environment and Resources*, 29:261-299.

BFS, 2011. Schweizer Landwirtschaft Taschenstatistik 2011. Swiss Federal Statistical Office. 2011.

Boller B.C. and Nösberger J. 1987: Symbiotically fixed nitrogen from field-grown white and red clover mixed with ryegrasses at low levels of 15N-fertilization. *Plant and Soil* 104:219-226.

Collomb S., Bisig W., Bütikofer U., Sieber R., Bregy M. and Etter L. 2008. Fatty acid composition of mountain milk from Switzerland. Comparison of organic and integrated farming systems. *International Dairy Journal* 18:976-982.

Couvreur S., Hurtaud C., Lopez C., Delaby L. and Peyraud J.L. 2006. The relationship between the proportion of fresh grass in the cow diet, mil fatty acid composition, and butter properties. *Journal of Dairy Science* 18:976-982.

Daepf M., Nösberger J. and Lüscher A. 2001. Nitrogen fertilization and the developmental stage alter the response of *Lolium perenne* to elevated CO<sub>2</sub>. *New Phytologist* 150:347-358.

Dewhurst R.J., Delaby L., Moloney A., Boland T. and Lewis E. 2009. Nutritive value of forage legumes used for grazing and silage. *Irish Journal of Agriculture and Food Research* 91:51-70.

Faurie O., Soussana J.F. and Sinoquet H. 1996. Radiation Interception, Partitioning and Use in Grass–Clover Mixtures. *Annals of Botany* 77:35-45.

Frey E. 1955. Neue Standardmischungen für den Futterbau. *Mitteilungen für die Schweizerische Landwirtschaft* 9:667-668.

Guckert A. and Hay R.K.M. 2001. The Overwintering, Spring Growth, and Yield in Mixed Species Swards, of White Clover in Europe. *Annals of Botany*, 88:667-668.

Kirwan L., Lüscher A., Sebastià M.T., Finn J.A., Collins R.P., Porqueddu C., Helgadottir A., Baadshaug O.H., Brophy C., Coran C., Dalmannsdóttir S., Delgado I., Elgersma A., Fothergill M., Frankow-Lindberg B.E., Golinski P., Grieu P., Gustavsson A.M., Höglind M., Huguenin-Elie O., Iliadis C., Jørgensen M., Kadziulienė Z., Karyotis T., Lunnan T., Malengier M., Maltoni S., Meyer V., Nyfeler D., Nykanen-Kurki P., Parente J., Smit H.J., Thumm U. and Connolly J. 2007. Evenness drives consistent diversity effects in intensive grassland systems across 28 European sites. *Journal of Ecology* 95:530–539.

Ledgard S.F. and Steele K.W. 1992 Biological nitrogen fixation in mixed legume/grass pastures. *Plant Soil*, 141, 137-153.

Nyfeler D., Huguenin-Elie O., Suter M., Frossard E., Connolly J. and Lüscher A. 2009 Transgressive overyielding in productive agricultural grassland across a broad range of species proportions and nitrogen fertilisation and three years. *Journal of Applied Ecology* 46:683-691.

Nyfeler D., Huguenin-Elie O., Suter M., Frossard E. and Lüscher A. 2011 Grass–legume mixtures can yield more nitrogen than legume pure stands due to mutual stimulation of nitrogen uptake from symbiotic and non-symbiotic sources. *Agriculture, Ecosystems and Environment* 140:155-163.

Ribeiro-Filho H.M.N., Delagarde R. and Peyraud J.L. 2003. Inclusion of white clover in strip-grazed perennial ryegrass pastures: herbage intake and milk yield of dairy cows at different ages of pasture regrowth. *Animal Science* 77:499-510.

Spiertz J.H.J. and Ewert F. 2009. Crop production and resource use to meet the growing demand for food, feed and fuel: opportunities and constraints. *NJAS* 56:281-300.

Suter D., Hirschi H.U., Briner H.U., Frick R., Jeangros B. and Bertossa M. 2008a. Liste der empfohlenen Futterpflanzen 2009-2010. *Agrarforschung*, 10:1-8.

Suter D., Rosenberg E., Frick R. and Mosimann E. 2008b. Standardmischungen für den Futterbau: Revision 2009-2012. *Agrarforschung* 10:1-12.

**Chapter 11: Pasture Naturalization - Yousef A. Papadopoulos, John Duynisveld, Michel S. McElroy, Sherry A.E. Fillmore and Alan Fredeen (Page 50)**

Blaser R.E., Taylor T., Griffeth W., Skrdla W. 1956. Seedling competition in establishing forage plants. *Agronomy Journal*. 48:1-6.

Clark E.A. 2001. Ch. 6 Diversity and stability in humid temperate pastures. pp. 103-118. In: P.G. Tow and A. Lazenby (eds) *Competition and Succession in Pastures*. CAB International Publishing, New York, N.Y. 322 pp.

- Grace J.B. and Julita H. 1999. The relationship between species density and community biomass in grazed and ungrazed coastal meadows. – *Oikos* 85: 398–408.
- Karnezos T.P. and Matches A.G. 1992. Modeling lamb weight changes on weight changes on wheatgrass-sainfoin and wheatgrass-sainfoin mixtures. *Agronomy Journal* 84(1): 5-10.
- Kunelius H.T. and Campbell A.J. 1984. Performance of sod-seeded temperate legumes in grass dominant swards. *Canadian Journal of Plant Science* 64(3): 643-650.
- McCloud D.E. and Mott G.O. 1953. Influence of grazing management and plant associations on the association upon forage yield of legume-grass mixtures. *Agronomy Journal* 45:61-65
- McElroy M.S., Papadopoulos Y.A. and Adl M.S. 2012. "Complexity and composition of pasture swards affect plant productivity and soil organisms." *Canadian Journal of Plant Science* 92(4): 687-697.
- Papadopoulos Y.A., Kunelius H.T. and Fredeen A.H. 1993. Factors influencing pasture productivity in Atlantic Canada, *Canadian Journal of Animal Science* 73(4): 699-713.
- Papadopoulos Y.A., Reekie E.G., Hunter K. and Gupta U.C. 1991. Changes in continuous timothy production with time in a long-term dykeland experiment. *Canadian Journal of Plant Science* 71(3): 761-769.
- Papadopoulos Y.A., McElroy M.S., Filmore S.A.E., McRae K.B., Duyinsveld J.L. and Fredeen A.H. 2012. Sward complexity and grass species composition affects the performance of grass-white clover pasture mixtures. *Can. J. Plant Sci.* 92: 1199-1205.
- Partel M., Laanisto L. and Zobel M. 2007. "Contrasting plant productivity-diversity relationships across latitude: The role of evolutionary history." *Ecology* 88(5): 1091-1097.
- Sanderson M.A., Skinner R.H., Barker D.J., Edwards G.R., Tracy B.F. and Wedin D.A. 2004. Plant species diversity and management of temperate forage and grazing land ecosystems. *Crop Science* 44, 1132–1144.
- Tilman D., Reich P.B., Knops J., Wedin D., Mielke T. and Lehman C. 2001. "Diversity and productivity in a long-term grassland experiment." *Science* 294(5543): 843-845.
- Tracy B.F. and Sanderson M.A. 2000. "Patterns of plant species richness in pasture lands of the northeast United States." *Plant Ecology* 149(2): 169-180.
- van Ruijven J. and Berendse F. 2005. "Diversity-productivity relationships: Initial effects, long-term patterns, and underlying mechanisms." *Proceedings of the National Academy of Sciences of the United States of America* 102(3): 695-700.
- Waide, R. B., Willig, M. R., Steiner, C. F. et al. 1999. The relationship between productivity and species richness. – *Annu. Rev. Ecol. Syst.* 30: 257–300.

**Chapter 12: Intra-Specific Competition and Self-Thinning in Orchardgrass - Shabtai Bittman and Derek Hunt (Page 54)**

No references.

**Chapter 13: Shifts in Pasture Communities Due to Nutrient Imbalances in the Aspen Parkland - Shabtai Bittman, Derek Hunt, Duane McCartney, John Waddington and Wes Nuttall (Page 56)**

Bittman S., McCartney D.H., Waddington J., Horton P.R. and Nuttall W.F. 1997. Long-term effects of fertilizer on yield and species composition of contrasting pasture swards in the Aspen Parkland of the Northern Great Plains. *Can. J. Plant Sci.* 77:607-614.

**Chapter 14: The Value of Pasture Weeds - Shabtai Bittman, Duane McCartney, Derek Hunt and John Waddington (Page 58)**

No references.

**BREEDING NEW FORAGE VARIETIES**

**Chapter 15: Breeding for Increased Forage Quality - Michael D. Casler (Page 60)**

Marten G.C., Jordan R.M. and Hovin A.W. 1976. Biological significance of reed canarygrass alkaloids and associated palatability variation to grazing sheep and cattle. *Agron. J.* 68:909-914.

Marten G.C., Jordan R.M. and Hovin A.W. 1981. Improved lamb performance associated with breeding for alkaloid reduction in reed canarygrass. *Crop Sci.* 21:295-298.

Walters R.J.K. 1984. D-value: the significance of small differences on animal performance. p. 60-68 *In* The Grass Ley Today, Proc. 18<sup>th</sup> NIAB Crop Conference. 12-13 Dec. 1984, Cambridge, UK. Natl. Inst. Agric. Bot., Cambridge.

**Chapter 16: Increasing Winter Hardiness in Alfalfa - Annick Bertrand and Yves Castonguay (Page 64)**

Bélanger G., Kunelius T., McKenzie D., Papadopoulos Y., Thomas B., McRae K., Fillmore S. and Christie B. 1999. Fall cutting management affects yield and persistence of alfalfa in Atlantic Canada. *Canadian Journal of Plant Science.* 79: 57-63.

Bélanger G., Rochette P., Castonguay Y., Bootsma A., Mongrain D. and Ryan D.A.J. 2002. Climate change and winter survival of perennial forage crops in eastern Canada. *Agronomy Journal.* 94: 1120-1130.

Bertrand A., Castonguay Y., Nadeau P., Laberge S., Rochette P., Michaud R., Bélanger G. and Benmoussa M. 2001. Molecular and biochemical responses of perennial forage crops to oxygen deprivation at low temperature. *Plant Cell and Environment.* 24: 1085-1093.

Bertrand A., Prévost D., Bigras F.J. and Castonguay Y. 2007. Elevated atmospheric CO<sub>2</sub> and strain of rhizobium alter freezing tolerance and cold-induced molecular changes in alfalfa (*Medicago sativa*). *Annals of Botany.* 99: 275-284.

Castonguay Y., Laberge S., Brummer E.C. and Volenec J.J. 2006 a. Alfalfa winter hardiness: a research retrospective and integrated perspective. *Advances in Agronomy.* 90: 203-265.

Castonguay Y., Cloutier J., Laberge S., Bertrand A. and Michaud R. 2006 b. A bulk segregant approach to identify genetic polymorphisms associated with cold tolerance in alfalfa. In: Chen *et al.* (eds.). *Cold hardiness in Plants. Molecular, genetics, cell biology and physiology.* CABI Publishing. Wallingford UK. pp. 88-102.

Castonguay Y., Michaud R., Nadeau P. and Bertrand A. 2009 a. An indoor screening method for improvement of freezing tolerance in alfalfa. *Crop Science.* 49: 809-818.

Castonguay Y., Cloutier J., Bertrand A., Michaud R. and Laberge S. 2010. SRAP polymorphisms associated with superior freezing tolerance in alfalfa (*Medicago sativa* spp. *sativa*). *Theoretical and Applied Genetics.* 120: 1611-1619.

Dhont C., Castonguay Y., Nadeau P., Michaud R., Bélanger G., Drapeau R. and Chalifour F.-P. 2004. Untimely fall harvest affects dry matter yield and root organic reserves in field-grown alfalfa. *Crop Science*. 44: 144-157.

Rémus-Borel W., Castonguay Y., Cloutier J., Michaud R., Bertrand A., Desgagnés R. and Laberge S. 2010. Dehydrin variants associated with superior freezing tolerance in alfalfa (*Medicago sativa* L.). *Theoretical and Applied Genetics*. 120: 1163-1174.

**Chapter 17: Persistence of Alfalfa Genotypes in Mixed Stands - Shabtai Bittman, Duane McCartney and Derek Hunt (Page 68)**

Bittman S. and McCartney D.H. 1994. Evaluating alfalfa cultivars and germplasms for pastures using the mob-grazing technique. *Can. J. Plant Sci.* 74: 109-114.

Bittman S., Waddington J. and McCartney D.H. 1991. Performance of alfalfa strains grown in mixture with smooth brome grass as affected by management. *Can J Plant Sci.* 71: 1029-1037

Brummer E.C. and Broughton J.H. 1991. Plant traits associated with grazing-tolerant alfalfa *Agron. J.* 83:996-1000

McLeod J.G., Muri R., Jefferson P.G., Bittman S. and McCartney D.H. 2009. Yellowhead alfalfa. *Can. J. Plant Sci.* 89: 653-655.

**Chapter 18: Benefits and Risks of Adapting Genetically-Engineered Crops: The Roundup Ready Alfalfa Story - Daniel H. Putnam and Steve B. Orloff (Page 71)**

Benbrook C. 2011. What are the Key Elements to Implement Coexistence between GE and Non-GE Alfalfa? IN Proceedings, Western Alfalfa & Forage Conference, Las Vega, NV 11-13 December, 2011. Department of Plant Sciences, University of California, Davis. For a series of excellent essays on coexistence in alfalfa which resulted from a panel discussion, see: <http://alfalfa.ucdavis.edu>

Hall M.H., Hebrock N.S, Pierson P.E., Caddel J.L., Owens V.N., Suc R.M., Undersander D.J. and Whitesides R.E. 2010. The Effects of Glyphosate-Tolerant Technology on Reduced Alfalfa Seeding Rates. *Agron. J.* 102:9110916.

McCaslin M. and Van Deynze A. 2012 Coexistence for Organic Alfalfa Seed and Hay Markets. NAFA Coexistence Document. <http://www.alfalfa.org/pdf/Organic.pdf>

National Alfalfa & Forage Alliance (NAFA), 2012. Winter Survival, Fall Dormancy, and Pest Resistance Ratings for Alfalfa Varieties, 2012 Edition. <http://www.alfalfa.org/varietyLeaflet.php>

Orloff S.B., Putnam D.H., Canevari M. and Lanini T. 2008 "Avoiding Weed Shifts and Weed Resistance in Roundup Ready Alfalfa Systems." Oakland: University of California Division of Agriculture and Natural Resources, Publication 8362, November 2008.

Orloff S.B. and Putnam D.H. 2011. Roundup-Ready Alfalfa—What have we learned to Date? IN Proceedings, Western Alfalfa & Forage Conference, Las Vega, NV 11-13 December, 2011. Department of Plant Sciences, University of California, Davis. See <http://alfalfa.ucdavis.edu>

Putnam D.H. Methods to Enable Coexistence of Diverse Production Systems Involving Genetically Engineered Alfalfa. University of California Agricultural Biotechnology in California Series Publication 8193. <http://ucanr.org/freepubs/docs/8193.pdf>

- Putnam D.H. and Orloff S.B. 2011. Grower Attitudes about Roundup-Ready Alfalfa: A Survey. IN Proceedings, Western Alfalfa & Forage Conference, Las Vega, NV 11-13 December, 2011. Department of Plant Sciences, University of California, Davis. See <http://alfalfa.ucdavis.edu> other alfalfa symposium proceedings.
- Putnam D.H., Reisen P., Plourd J., Gauntt C. and Norberg S. 2012. Coexistence for Alfalfa Hay Export Markets'. NAFA Coexistence Document. <http://www.alfalfa.org/pdf/CSExportHay.pdf>
- Russelle M. 2001. Alfalfa. After an 8,000 year journey, the "Queen of Forages" stands poised to enjoy renewed popularity. American Scientist. May-June, 2001.
- Simon W.A. 2011. What are the key elements to implement coexistence between GE and Non-GE Alfalfa? IN Proceedings, Western Alfalfa & Forage Conference, Las Vega, NV 11-13 December, 2011. Department of Plant Sciences, University of California, Davis. See <http://alfalfa.ucdavis.edu>
- Teuber L.R., Schlosser M.E., Stewart R.F., Blank T.J. and Cabbage J.S. 2011. Facilitation of Coexistence: Alfalfa Isolation Management Map and Alfalfa Seed Stewardship Program. [http://ccia.ucdavis.edu/crop\\_mapping/coexistenceMapping.pdf](http://ccia.ucdavis.edu/crop_mapping/coexistenceMapping.pdf)
- USDA-Animal and Plant Health Inspection Service (USDA-APHIS), 2012. For complete documents related to the history of RRA, and the Environmental Impact Statement and other APHIS documents, see <http://www.aphis.usda.gov/biotechnology/alfalfa.shtml>
- USDA-Economic Research Service (USDA-ERS), 2011. Adaptation of Genetically Engineered Crops in the US <http://www.ers.usda.gov/Data/BiotechCrops/>
- Van Dynze A., Putnam D.H., Orloff S., Lanini T., Canevari M., Vargas R., Hembree K., Mueller S. and Teuber L. 2004. Roundup Ready Alfalfa: An Emerging Technology. University of California Division of Agriculture and Natural Resources Publication 8153. <http://anrcatalog.ucdavis.edu/pdf/8153.pdf>
- Van Deynze A.E., Fitzpatrick S., Hammon B., McCaslin M.H., Putnam D.H., Teuber L.R. and Undersander D.J. 2008. Gene Flow in Alfalfa: Biology, Mitigation, and Potential Impact on Production. Council for Agricultural Science and Technology. Ames, IA.
- Weed Science Society of America. International Survey of Herbicide Resistant Weeds. <http://www.weedscience.org/In.asp>

#### **Chapter 19: Creating Dedicated Bioenergy Crops - Michael D. Casler (Page 77)**

- Anderson W.F., Casler M.D. and Baldwin B.S. 2008. Improvement of perennial forage species as feedstock. In: W. Vermerris (ed) Genetic improvement of bioenergy crops. Springer-Verlag, New York. p. 309-345.
- Austin R.B., Bingham J., Blackwell R.D., Evans L.T., Ford M.A., Morgan C.L. and Taylor M. 1980. Genetic improvements in winter wheat yields since 1900 and associated physiological changes. J. Agric. Sci. 94:675-689.
- Chen F. and Dixon R.A. 2007. Lignin modification improves fermentable sugar yields for biofuel production. Nature Biotech. 25:759-761.
- Davis J.M. 2008. Genetic improvement of poplar (*Populus* spp.) as a bioenergy crop. In: W. Vermerris (ed) Genetic improvement of bioenergy crops. Springer-Verlag, New York. p.377-396.
- Halford N.G. and Karp A. (eds). 2011. Energy crops. RSC Publishing, Cambridge, UK.



- Kim S., Rayburn A.L., Voigt T., Parrish A. and Lee D.K. 2011. Salinity effects on germination and plant growth of prairie cordgrass and switchgrass. *Bioenergy Res.* DOI 10.1007/s12155-011-9145-3.
- Perrin R., Vogel K.P., Schmer M. and Mitchell R. 2008. Farm-scale production cost of switchgrass for biomass. *Bioenergy Res.* 1:91-97.
- Peter G.F. 2008. Southern pines: A resource for bioenergy. In: W. Vermerris (ed) Genetic improvement of bioenergy crops. Springer-Verlag, New York. p. 397-419.
- Russell W.A. 1991. Genetic improvement of maize yields. *Advan. Agron.* 46:245-298.
- Sanderson M.A., Adler P.R., Boateng A.A., Casler M.D. and Sarath G. 2007. Switchgrass as a biofuels feedstock in the USA. *Can. J. Plant Sci.* 86:1315-1325.
- Shinners K.J., Wepner A.D., Muck R.E. and Weimer P.J. 2010. Aerobic and anaerobic storage of single-pass, chopped corn stover. *Bioenergy Res.* 4:61-75.
- Smart L.B. and Cameron K.D. 2008. Genetic improvement of willow (*Salix* spp.) as a dedicated bioenergy crop. In: W. Vermerris (ed) Genetic improvement of bioenergy crops. Springer-Verlag, New York. p.347-376.
- Tahir M.H.N., Casler M.D., Moore K.J. and Brummer E.C. 2011. Biomass yield and quality of reed canarygrass under five harvest management systems for bioenergy production. *Bioenergy Res.* 4:111-119.
- Tew T.L. and Cobill R.M. 2008. Genetic improvement of sugarcane (*Saccharum* spp.) as an energy crop. In: W. Vermerris (ed) Genetic improvement of bioenergy crops. Springer-Verlag, New York. p. 249-272.
- Vogel K.P. and Jung H. 2001. Genetic modification of herbaceous plants for feed and fuel. *Crit. Rev. Plant Sci.* 20:15-50.

## SOIL NUTRIENTS

### Chapter 20: Benefits of Perennial Forages in Rotations - Bill Jokela and Michael Russelle (Page 84)

- Bolton E.F., Dirks V.A. and Aylesworth J.W. 1976. Some effects of alfalfa, fertilizer and lime on corn yield in rotations on clay soil during a range of seasonal moisture conditions. *Can. J. Soil Sci.* 56:21-25.
- Bruderie A. and Deters E. 2010. Annual farm business management program report: Southwest, South Central, and Southeast Minnesota. Available online: [www.mgt.org/fbm/reports/2009/Southern%20Minnesota%202009%20Analysis.pdf](http://www.mgt.org/fbm/reports/2009/Southern%20Minnesota%202009%20Analysis.pdf)
- Census of Agriculture. 2006. Statistics Canada, Ottawa. <http://statcan.gc.ca/ca-ra2006/>
- Census of Agriculture. 2007. Vol. 1. U.S. Summary and State Reports. USDA-National Agricultural Statistics Service, Washington, D.C. [http://www.agcensus.usda.gov/Publications/2007/Full\\_Report/](http://www.agcensus.usda.gov/Publications/2007/Full_Report/)
- Charbonneau É., Oba M. and Pellerin D. 2011. The impact of forage use and quality on economic returns of Canadian dairy farms. *Advances in Dairy Technology. Proc. Western Canadian Dairy Seminar* 23:349-359. Available online: [www.wcds.ca/proc/2011/Manuscripts/Charbonneau.pdf](http://www.wcds.ca/proc/2011/Manuscripts/Charbonneau.pdf)
- Drinkwater L.E., Wagoner P. and Sarrantonio M. 1998. Legume-based cropping systems have reduced carbon and nitrogen losses. *Nature (London)* 396:262–265.

- Feyereisen G.W., Wilson B.N., Sands G.R., Strock J.S. and Porter P.M. 2006. Potential for a rye cover crop to reduce nitrate loss in Southwestern Minnesota. *Agron. J.* 98:1416-1426.
- Hesterman O.B., Griffin T.S., Williams P.T., Harris G.H. and Christenson D.R. 1992. Forage-legume small-grain intercrops: nitrogen production and response of subsequent corn. *J. Prod. Agric.* 5:340-348.
- Huggins D.R., Randall G.W. and Russelle M.P. 2001. Subsurface drain losses of water and nitrate following conversion of perennials to row crops. *Agron. J.* 93:477-486.
- Jokela W.E., Posner J.L., Hedtcke J.L., Balser T.C. and Read H. 2011. Midwest cropping system effects on soil properties and on a soil quality index. *Agron. J.* 103:1552-1562.
- Jokela W.E., Grabber J.H., Karlen D.L., Balser T.C. and Palmquist D.E. 2009. Cover crop and liquid manure effects on soil quality indicators in a corn silage system. *Agron. J.* 101:727-737.
- Kahkbazan M., Mohr R.M., Volkmar K.M., Tomasiewicz D.J., Moulin A.P., Derksen D.A., Irvine B.R., McLaren D.L. and Monreal M.A. 2010. The economics of irrigated potato crop rotation in Manitoba. *Am. J. Pot. Res.* 87:446-457.
- Kaiser, D.E., Lamb, J.A. and Eliason, R. Fertilizer recommendations for agronomic crops in Minnesota. Univ. of Minnesota Extension, St. Paul, MN. BU-06240-S Revised 2011.
- Karlen D.L., Hurley E.G., Andrews S.S., Cambardella C.A., Meek D.W., Duffy M.D. and Mallarino A.P. 2006. Crop rotation effects on soil quality at three northern Corn/Soybean Belt locations. *Agron. J.* 98:484-495.
- Kelling K.A., Speth P.E., Kilian K., Wood T. and Mlynarek M. 2001. Date of kill on legume N credit to winter wheat. p. 369-373. *Proc. Wisc. Fertilizer, Agrilime & Pest Manag. Conf.* 16-18 January 2001. Madison, WI. Available online: [www.soils.wisc.edu/extension/wcmc/proceedings01/Kelling-et-al.PDF](http://www.soils.wisc.edu/extension/wcmc/proceedings01/Kelling-et-al.PDF)
- Kelling K.A., Speth P.E., Kilian K., Wood T. and Mlynarek M. 2002. Direct comparison of alfalfa nitrogen credits to corn and wheat. *Proc. Wisc. Fertilizer, Agrilime & Pest Manag. Conf.* January 2002. Madison, WI. Available online: <http://www.soils.wisc.edu/extension/wcmc/2002proceedings/Kelling-2Conf-2002.pdf>
- Kelling K.A. and Schmitt M.A. 2003. Applying manure to alfalfa: pros, cons, and recommendations for three application strategies. North Central Regional Research Report 346. Univ. of Wisconsin, Madison, WI.
- Laboski, C.A.M. and Peters, J.B. 2012. Nutrient application guidelines for field, vegetable, and fruit crops in Wisconsin. Univ. of Wisconsin-Extension, Madison, WI. A2809. <http://learningstore.uwex.edu/Assets/pdfs/A2809.pdf>
- Lawrence J.R., Ketterings Q.M. and Cherney J.H. 2008. Effect of nitrogen application on yield and quality of silage corn after forage legume-grass. *Agron. J.* 100:73-79.
- Manitoba Agriculture, Food and Rural Initiatives (MAFRI) (Ref.1). Soil Fertility Guide. <http://www.gov.mb.ca/agriculture/soilwater/nutrient/fbd02s02.html>
- Manitoba Agriculture, Food and Rural Initiatives (MAFRI) (Ref.2). Retrieval strategies for deep-leached nitrates [www.gov.mb.ca/agriculture/soilwater/soil/fbd01s04.html](http://www.gov.mb.ca/agriculture/soilwater/soil/fbd01s04.html)
- Mallarino A.P. and Pecinovsky K. 2006. Effects of crop rotation and nitrogen fertilization of corn on yields of corn, soybean, and oats. ISRF06-13. Iowa State Univ., Ames, IA. Available online: [www.ag.iastate.edu/farms/06reports/ne/EffectofCropRotation.pdf](http://www.ag.iastate.edu/farms/06reports/ne/EffectofCropRotation.pdf)

- Meyer-Aurich A., Weersink A., Janovicek K. and Deen B. 2006. Cost efficient rotation and tillage options to sequester carbon and mitigate GHG emissions from agriculture in Eastern Canada. *Agric., Ecosys. Environ.* 117:119-127.
- Mohr R.M., Entz M.H., Janzen H.H. and Bullied W.J. 1999. Plant-available nitrogen supply as affected by method and timing of alfalfa termination. *Agron. J.* 91:622-630.
- Olmstead J. and Brummer E.C. 2008. Benefits and barriers to perennial forage crops in Iowa corn and soybean rotations. *Renew. Agric. Food Syst.* 23:97-107.
- OMAFRA. 2006. New OMAFRA General Recommended Nitrogen Rates for Corn: The Ontario Corn N Worksheet. [www.omafra.gov.on.ca/english/crops/facts/nitroratescorn.htm](http://www.omafra.gov.on.ca/english/crops/facts/nitroratescorn.htm)
- Randall G.W., Huggins D.R., Russelle M.P., Fuchs D.J., Nelson W.W. and Anderson J.L. 1997. Nitrate losses through subsurface tile drainage in Conservation Reserve Program, alfalfa, and row crop systems. *J. Environ. Qual.* 26:1240-1247.
- Roberson T., Bundy L.G. and Andraski T.W. 2007. Freezing and drying effects on potential plant contributions to phosphorus in runoff. *J. Environ. Qual.* 36:532-539.
- Russell A.E., Laird D.A. and Mallarino A.P. 2006. Nitrogen fertilization and cropping system impacts on soil quality in Midwestern Mollisols. *Soil Sci. Soc. Am. J.* 70:249-255.
- Russelle M.P., Kelley D.W., Birr A.S. and Tiffany D.G. 2010. Spatial ramifications of crop selection: Water quality and biomass energy. p. 395-424. *In* D.E. Clay and J. Shanahan (eds.) *GIS Applications in Agriculture: Nutrient Management for Energy Efficiency*. CRC Press, Boca Raton, FL.
- Sahs W.W. and Lesoing G. 1985. Crop rotations and manure vs agricultural chemicals in dryland grain production. *J. Soil Water Conserv.* 40: 6 511-516.
- Sharp W.C., Schertz D.L. and Carlson J.R. 1995. Forages for conservation and soil stabilization. p. 243-262. *In* Barnes et al., (ed.) *Forages: The science of grassland agriculture*. Vol. II. 5<sup>th</sup> ed. Iowa State Univ. Press, Ames, IA.
- Shaver R.D. (no date) Balancing use of corn silage and alfalfa in dairy rations. Dept. Dairy Science, Univ. Wisc., Madison, WI. Available online: [www.uwex.edu/ces/forage/wfc/shaver.html](http://www.uwex.edu/ces/forage/wfc/shaver.html)
- Stanger T.F. and Lauer J.G. 2008. Corn grain yield response to crop rotation and nitrogen over 35 years. *Agron. J.* 100:643-650.
- Strock J.S., Porter P.M. and Russelle M.P. 2004. Cover cropping to reduce nitrate loss through subsurface drainage in the Northern U.S. Corn Belt. *J. Environ. Qual.* 33:1010-1016.
- Stute J., Shelley K., Mueller D.H. and Wood T. 2007. Planting winter rye after corn silage: managing for forage. Univ Wisconsin-Extension, Madison, WI. Available online: [www.soils.wisc.edu/extension/materials/Rye\\_after\\_corn.pdf](http://www.soils.wisc.edu/extension/materials/Rye_after_corn.pdf)
- Zebarth B., Brown W. and Karemangingo C. 2006. Nitrogen Management for Corn: General Fertilizer Recommendations. [www.nbscia.ca/sitebuildercontent/sitebuilderfiles/corn\\_general.pdf](http://www.nbscia.ca/sitebuildercontent/sitebuilderfiles/corn_general.pdf)
- Zhou X., Helmers M.J., Asbjornsen H., Kolka R. and Tomer M.D. 2010. Perennial filter strips reduce nitrate levels in soil and shallow groundwater after grassland-to-cropland conversion. *J. Environ. Qual.* 39:2006-2015

Zhang X., Brown R., Vincent L., Skinner W., Feng Y. and Mekis E. 2011. Canadian climate trends, 1950-2007. Canadian biodiversity: Ecosystem status and trends 2010, Tech. Thematic Rep. No. 5 Canadian Councils of Resource Ministers. Ottawa, ON. Available online:  
[www.speciesatrisk.ca/resource/DOCUMENT/4876No.5\\_General%20Climate%20July%202011\\_E.pdf](http://www.speciesatrisk.ca/resource/DOCUMENT/4876No.5_General%20Climate%20July%202011_E.pdf)

**Chapter 21: Nutrient Losses from Forage Stands in the Non-Growing Season - Martin Chantigny, Marja Maljanen, Perttu Virkajärvi and Mats Öquist (Page 88)**

Arenson L.U. and Segro D.C. 2006. The effect of salinity on the freezing of coarse grained sands. *Can. Geotech. J.* 43:325-338.

Clark K., Chantigny M.H., Angers D.A., Rochette P. and Parent L.E. 2009. Nitrogen transformations in cold and frozen agricultural soils following amendment. *Soil Biol. Biochem.* 41:348-356.

Coxson D.S. and Parkinson D. 1987. Winter respiratory activity in aspen woodland forest floor litter and soils. *Soil Biol. Biochem.* 19:49-59.

Dörsch P. and Bakken L.R. 2004. Low-temperature response of denitrification: comparison of soils. *Eurasian Soil Science* 37: supplement 1, S102-S106.

Harrysson-Drotz S., Sparrman T., Nilsson M.B., Schleucher J. and Öquist M.G. 2010. Both catabolic and anabolic heterotrophic microbial activity proceed in frozen soils. *PNAS* 107:21046-21051.

Henry H.A.L. 2008. Climate change and soil freezing dynamics: historical trends and projected changes. *Climatic Change* 87:421-434.

Intergovernmental Panel on Climate Change (IPCC). 2007. Fourth assessment report: climate change 2007. Working Group I Report: the physical science basis. Solomon S., D. Qin, M. Manning, Z. Chen, M. Marquis, K.B. Averyt, M. Tignor and H.L. Miller (eds.). Cambridge University Press, Cambridge, United Kingdom and New York, NY, USA, 996 pp.

Jeffries R.L., Walker N.A., Edwards K.A. and Dainty J. 2010. Is the decline of soil microbial biomass in late winter coupled to changes in the physical state of cold soils? *Soil Biol. Biochem.* 42:129-135.

Jungnitsch P.F., Schoenau J.J., Lardner H.A. and Jefferson P.G. 2011. Winter feeding beef cattle on the western Canadian prairies: impacts on soil nitrogen and phosphorus cycling and forage growth. *Agric. Ecosyst. Environ.* 141:143-152.

Lauer D.A., Bouldin D.R. and Klausner S.D. 1976. Ammonia volatilization from dairy manure spread on the soil surface. *J. Environ. Qual.* 5:134-141.

MacDonald J.D., Rochette P., Chantigny M.H., Angers D.A., Royer I. and Gasser M.O. 2010. Ploughing a poorly drained grassland reduced N<sub>2</sub>O compared to chemical fallow. *Soil Till. Res.* 111:123-132.

Maljanen M., Virkajärvi P., Hytönen J., Öquist M., Sparrman T. and Martikainen P.J. 2009. Nitrous oxide production in boreal soils with variable organic matter content at low temperature – snow manipulation experiment. *Biogeosciences* 6:2461-2473.

Mikan C.J., Schimel J.P. and Doyle A.P. 2002. Temperature controls of microbial respiration in arctic tundra soils above and below freezing. *Soil Biol. Biochem.* 34 :1785-1795.

- Öquist M.G., Sparrman T., Klemedtsson L., Harrysson-Drotz S., Grip H., Schleucher J. and Nilsson M. 2009. Water availability controls microbial temperature responses in frozen soil CO<sub>2</sub> production. *Global Change Biology* 15:2715-2727.
- Öquist M.G., Nilsson M.N., Sörensson F., Persson T., Kasimir-Klemedtsson A., Weslien P. and Klemedtsson L.K. 2004. Nitrous oxide production in a forest soil at low temperatures— processes and environmental controls. *FEMS Microb. Ecol.* 49:371–378.
- Ryan M.C., Kachanoski R.G. and Gillham R.W. 2000. Overwinter soil nitrogen dynamics in seasonally frozen soils. *Can. J. Soil Sci.* 80:541-550.
- Saarijärvi K., Virkajärvi P., Heinonen-Tanski H. and Taipainen I. 2004. N and P leaching and microbial contamination from intensively managed pasture and cut sward on sandy soil in Finland. *Agric. Ecosyst. Environ.* 104:621-630.
- Saarijärvi K., Virkajärvi P. and Heinonen-Tanski H. 2007. Nitrogen leaching and herbage production on intensively managed grass and grass-clover pastures on sandy soil in Finland. *Eur. J. Soil Sci.* 58:1382-1392.
- Scott-Denton L.E., Rosenstiel T.N. and Monson R.K. 2006. Differential controls by climate and substrate over the heterotrophic and rhizosphere components of soil respiration. *Global Change Biology* 12:205-216.
- Turtola E., Alakukku L., Uusitalo R. And Kaseva A. 2007. Surface runoff, subsurface drainflow and soil erosion as affected by tillage in a clayey Finnish soil. *Agric. Food Sci.* 16:332-351
- Uusi-Kämpö J., Turtola E., Närvänen A. and Uusitalo R. 2011. Phosphorus mitigation during Springtime runoff by amendments applied to grassed soil. *J. Environ. Qual.* 40:1-7.
- Van Es H.M., Schindelbeck R.R. and Jokela W.E. 2004. Effect of manure application timing, crop, and soil type on phosphorus leaching. *J. Environ. Qual.* 33:1070-1080.
- Virkajärvi P., Maljanen M., Saarijärvi K., Haapala J. and Martikainen P.J. 2010. N<sub>2</sub>O emissions from boreal grass and grass-clover pasture soils. *Agric. Ecosyst. Environ.* 137:59-67.
- Wachendorf C., Lampe C., Taube F. and Dittert K. 2008. Nitrous oxide emissions and dynamics of soil nitrogen under <sup>15</sup>N-labeled cow urine and dung patches on a sandy grassland soil. *J. Plant Nutr. Soil Sci.* 171:171-180.
- Wagner-Riddle C., Hu Q.C., van Bochove E. and Jayasundara S. 2008. Linking nitrous oxide flux during spring thaw to nitrate denitrification in the soil profile. *Soil Sci. Soc. Am. J.* 72:908-916.

**Chapter 22: Real-time Simulation Models—A Novel Tool for Farm Nitrogen Management - Derek Hunt, Shabtai Bittman and Ron Fretwell (Page 92)**

- Ball D.M., Hoveland C.S. and Lacefield G.D. 1991. *Southern Forages*. Potash and Phosphate Institute and Foundation for Agronomic Research, Norcross, GA., USA.
- Bittman S., Hunt D.E. and Shaffer M.J. 2001. NLOS -A nitrogen cycling model with a graphical interface: implications for model developers and users. In *Modeling Carbon and Nitrogen Dynamics for Soil Management*. Ed. M.J. Shaffer et al. CRC PRESS LLC, Boca Raton, FL. Ch.11 pp. 283-402.
- Blackmer A.M., Pottker D., Cerrato M.E. and Webb J. 1989. Correlations between soil nitrate concentrations in late spring and corn yields in Iowa. *J. Prod. Agriculture.* 2:103-109.

- Bundy L.G., Sturgul S.J. and Schmidt R.W. 1995. #A3512-Wisconsin's Preplant Soil Nitrate TEST. UW-Extension, NPM. R-5-95-3M.
- Chambers B.J., Lord E.I., Nicholson F.A. and Smith K.A. 1999. Predicting nitrogen availability and losses following application of organic manures to arable land: MANNER. *Soil Use and Management* 15, 137-143.
- Clark C., Hunt D. and Bittman S. 2004. Interpreting Soil N Tests with the Help of Computer Simulation pp. 38-40. In Bittman, S. and Kowalenko, C.G. (eds.) 2004. *Advanced Silage Corn Management*. Pacific Field Corn Assoc., Agassiz, BC. 156 pp. (ISBN: 0-9685015-1-6)
- Eckersten H. and Jansson P-E. 1991. Modelling water flow, nitrogen uptake and production for wheat. *Fertilizer Research* 27:313-329.
- Eckersten H., Jansson P-E. and Johnsson H. 1994. SOILN model, user's manual. 2nd edition Division of Agricultural Hydraulics Communications 94:4, Department of Soil Sciences, Swedish University of Agricultural Sciences, Uppsala. 58pp.
- Herrmann A., Kornher A. and Taube F. 2005. A new harvest time prognosis tool for forage maize production in Germany. *Agricultural and Forest Meteorology* 130 (2005) 95-111.
- Kroes J.G. and Roelsma J. 1998: ANIMO 3.5; user's guide for the ANIMO version 3.5 nutrient leaching model. Wageningen, SC-DLO, 1998. Techn. Doc. 46, 98 pp.
- Melkonian J.J., van Es H.M. and Joseph L. 2005 Precision Nitrogen Model: Simulation of Nitrogen and Water Fluxes in the Soil–Crop–Atmosphere Continuum in Maize (*Zea mays* L.) Production Systems. Version 1.0. Dept. of Crop and Soil Sciences. Research series No. R05–2. Cornell Univ., Ithaca, NY, U.S.A.
- Rijtema P.E. and Kroes J.G. 1991: Some results of nitrogen simulations with the model ANIMO. *Fertilizer Research* 27: 189-198
- van Es H., Melkonian J., Moebius-Clune B., Schindelbeck B., Joseph L. and DeGaetano A. 2010. Adapt-N Tool Helps Farmers Deal with Climate Change, Energy Consumption and Greenhouse Gas Emissions, What's Cropping Up? 20, p 6-7.
- Chapter 23: Managing Phosphorus - C. Grant Kowalenko (Page 96)**
- Bittman S., Kowalenko C.G., Hunt D.E., Forge T.A. and Wu X. 2006. Starter fertilizer and broadcast nutrients on corn with contrasting colonization by arbuscular mycorrhizae. *Agron. J.* 98, 394-401.
- Giroux M. and Tran T.S. 1996. Critères agronomiques et environnementaux liés à la disponibilité, la solubilité et la saturation en phosphore des sols agricoles du Québec. *Agrisol* 9, 51-54.
- Ige D.V., Akinremi O.O. and Flaten D.N. 2005. Environmental index for estimating the risk of phosphorus loss in calcareous soils of Manitoba. *J. Environ. Qual.* 43, 1944-1951.
- Kowalenko C.G. 2005. Binding of inorganic sulphate and phosphate in humid-climate soils measured using column leaching, equilibration and extraction methods. *Can. J. Soil Sci.* 85, 599-610.
- Kowalenko C.G. and Babuin D. 2007. Interference problems with phosphoantimonylmolybdenum colorimetric measurement of phosphorus in soil and plant materials. *Commun. Soil Sci. Plant Anal.* 38, 1299-1319.
- Kowalenko C.G. and Poon D. 2010. Relationships between Extraction Methods for Soil Nutrient Testing in British Columbia. Via <http://www.agf.gov.bc.ca/resmgmt/NutrientMgmt/#interpreting>.

- Kowalenko C.G., Schmidt O. and Hughes-Games G.A. 2007. Fraser Valley soil nutrient study 2005. A survey of the nitrogen, phosphorus and potassium contents of the Lower Fraser Valley agricultural soils in relation to environmental and agronomic concerns. Via <http://www.agf.gov.bc.ca/resmgmt/NutrientMgmt/#interpreting>.
- Kowalenko C.G., Schmidt O., Kenney E., Neilsen D. and Poon D. 2009. Okanagan Agricultural Soil Study 2007. A Survey of the Chemical and Physical Properties of Agricultural Soils of the Okanagan and Similkameen Valleys in Relation to Agronomic and Environmental Concerns. Via <http://www.agf.gov.bc.ca/resmgmt/NutrientMgmt/#interpreting>.
- Negassa W. and Leinweber P. 2009. How does the Hedley sequential phosphorus fractionation reflect impacts of land use and management on soil phosphorus: A review. *J. Plant Nutr. Soil Sci.* 172, 305-325.
- Pellerin A., Parent L.-E., Fortin J., Tremblay C., Khiari L. and Giroux M. 2006. Environmental Mehlich-III soil phosphorus saturation indices for Quebec acid to near neutral soils varying in texture and genesis. *Can. J. Soil Sci.* 86, 711-723.
- Sharpley A.N., Klienman P.J.A. and Weld J.L. 2008. Environmental soil phosphorus indices. Pages 141-159 in Carter, M.R. and Gregorich, E.G. (eds.) *Soil sampling and methods of analysis*. CRC Press, Boca Raton, FL.
- Sims J.T., Maguire R.O., Leyten A.B., Gartley K.L. and Paulter M.C. 2002. Evaluation of Mehlich 3 as an agri-environmental soil phosphorus test for the mid-Atlantic United States of America. *Soil Sci. Soc. Am. J.* 66, 2016-2032.
- Tisdale S.L., Nelson W.L. and Beaton J.D. 1985. *Soil fertility and fertilizers*. 4<sup>th</sup> edition. Macmillan Publ. Co., New York.

#### **Chapter 24: Sulphur Deficiency Uncovered: British Columbia Experience - C. Grant Kowalenko (Page 101)**

- Arnold W. and Stoeppler M. 2004. Sulfur. Pages 1297-1319 in Merian, E., Anke, M., Ihnat, M and Stoeppler, M. eds. *Elements and their compounds in the environment. Occurrence, analysis and biological relevance. Volume 3: Nonmetals, particular aspects*. 2<sup>nd</sup> ed. Wiley-VCH, Weinham Germany.
- Boila R.J., Devlin T.J. and Wittenberg K.M. 1987. Geographical variation of the total sulfur content of forages in northwestern Manitoba. *Can. J. Anim. Sci.* 67, 869-872.
- Blair G.J., Lefroy R.D.B., Chinoim N. and Anderson G.C. 1993. Sulfur soil testing. *Plant Soil* 155/156, 383-389.
- Jez J. (ed.) 2008. *Sulfur: a missing link between soils, crops, and nutrition*. Agron. Monog. 50. Am. Soc. Agron. Am., Crop Sci. Soc. Am., Soil Sci Am., Madison Wisc. 329 pages.
- Mills H.A. and Jones J.B., Jr. 1996. *Plant analysis handbook II, a practical sampling, preparation, analysis, and interpretation*. MicroMacro Publ., Athens, Georgia. 422 pages.
- Ketterings Q.M., Godwin G., Gami S., Dietzel K., Lawrence J., Barney P, Kilcer T., Stanyard M., Albers C., Cherney C., Cherney D. and Czymmek K.J. 2012. Soil and tissue testing for sulfur management of alfalfa in New York State. *Soil Sci. Soc. Am. J.* 76, 298-306.
- Kowalenko C.G. 1984. Yield response of forage grass to sulphur to sulphur applications on Fraser Valley soils. Pages 823-827 in *Proceedings of Sulphu-84, Sulphur Development Institute of Canada (SUDIC), Calgary, Alberta, Canada*.

Kowalenko C.G., ed. 1993. Soil test analysis methods for British Columbia agricultural crops. B.C. Min. Agric., Fisheries and Food. Victoria, B.C. 187 pages. (<http://prsss.landfood.ubc.ca/resources/archives/digital-library/>)

Kowalenko C.G. 2000. Influence of sulphur and nitrogen fertilizer applications and within-season sampling time on measurement of total sulphur on orchardgrass by six different methods. *Commun. Soil Sci. Plant Anal.* 31, 345-354.

Kowalenko C.G. 2004. Response of forage grass to sulphur applications on coastal British Columbia soils. *Can. J. Soil Sci.* 84, 227-236.

Kowalenko C.G. 2005. Binding of inorganic sulphate and phosphate in humid-climate soils measured using column leaching, equilibration and extraction methods. *Can. J. Soil Sci.* 85, 599-610.

Kowalenko C.G. 2008. Extraction times and analysis methods influence soil test measurements of phosphorus and sulphur. *Can. J. Soil Sci.* 88, 733-747.

Kowalenko C.G. 2009a. Changes in soil extractable sulphate under field fallow conditions after application of three contrasting sulphur fertilizers. *Can. J. Soil Sci.* 89, 501-510.

Kowalenko C.G. 2009b. Availability of single spring applications of three sulphur fertilizer sources to grass under humid weather conditions. *Can. J. Soil Sci.* 89, 511-519.

Scherer H.W. 2001. Sulphur in crop production – invited paper. *European J. Agron.* 14, 81-111.

Scherer H.W. 2009. Sulphur in soils. *J. Plant Nutr. Soil Sci.* 172, 326-335.

**Chapter 25: How to Improve Nutrient Efficiency of Whole Dairy Farms - Shabtai Bittman, Derek Hunt, Mary Lou Swift, Michael Casler, Dan Undersander and Yousef Papadopoulos (Page 104)**

Aarts H.F.M., Habekotté B. and Van Keulen H. 2000. Nitrogen (N) Management in the 'De Marke' dairy farming system. *Nutrient Cycling in Agroecosystems* 56: 231-240.

Hilhorst G.J., Oenema J. and Van Keulen H. 2001. Nitrogen management on experimental dairy farm 'De Marke'; farming system, objectives and results. *Netherlands Journal of Agricultural Science* 49: 135-151.

Oenema J. and Verloop J. 2004. Whole-Farm Nutrient Management. In Bittman, S. and Kowalenko, C.G. (eds.) 2004. *Advanced Silage Corn Management*. Pacific Field Corn Assoc., Agassiz, BC. 156 pp. (ISBN: 0-96 85015-1-6)

## **MANAGING WASTE**

**Chapter 26: Slurry Application on Grass - Stan T.J. Lalor (Page 110)**

Coulter B.S. and Lalor S. (Editors) 2008. Major and micro nutrient advice for productive agricultural crops. 3<sup>rd</sup> Ed. Teagasc, Johnstown Castle, Wexford, 116 pp.

DEFRA, 2010. Fertiliser Manual (RB 209) 8<sup>th</sup> Edition. The Stationery Office, Norwich, UK.



Lalor S.T.J. and Schulte R.P.O. 2008. Low ammonia emission application methods can increase the opportunity for application of cattle slurry to grassland in spring in Ireland. *Grass and Forage Science*, 63: 531-544.

Lalor S.T.J., Schröder J.J., Lantinga E.A., Oenema O., Kirwan L. and Schulte R.P.O. 2011. Nitrogen Fertilizer Replacement Value of Cattle Slurry in Grassland as Affected by Method and Timing of Application. *Journal of Environment Quality*, 40(2): 362-373.

Laws J.A. and Pain B.F. 2002. Effects of method, rate and timing of slurry application to grassland on the preference by cattle for treated and untreated areas of pasture. *Grass and Forage Science*, 57(2): 93-104.

Laws J.A., Smith K.A., Jackson D.R. and Pain B.F. 2002. Effects of slurry application method and timing on grass silage quality. *Journal of Agricultural Science*, 139: 371-384.

Moal J.F., Martinez J., Guiziou F. and Coste C.M. 1995. Ammonia volatilization following surface-applied pig and cattle slurry in France. *Journal of Agricultural Science*, 125: 245-252.

Reidy B. and Menzi H. 2007. Assessment of the ammonia abatement potential of different geographical regions and altitudinal zones based on a large-scale farm and manure management survey. *Biosystems Engineering*, 97(4): 520-531.

Sommer S.G. and Olesen J.E. 2000. Modelling ammonia volatilization from animal slurry applied with trail hoses to cereals. *Atmospheric Environment*, 34(15): 2361-2372.

Tunney H. and Molloy S.M. 1975. Field test for estimating dry matter and fertiliser value of slurry - preliminary report. *Irish Journal of Agricultural Research*, 14: 84-86.

#### **Chapter 27: Developing a Shallow Injection Tine for Slurry Application Into Grasslands - Lena Rodhe (Page 116)**

Rodhe L., Rydberg T. and Gebresenbet G. 2004. The influence of shallow injector design on ammonia emissions and draught requirement under different soil conditions. *Biosystems Engineering* 89(2), 237-251.

Rodhe L. and Etana A. 2005. Performance of slurry injectors compared with band spreading on three Swedish soils with ley. *Biosystems Engineering* 92(1), 107-118.

Rodhe L., Pell M. and Yamulki S. 2006. Nitrous oxide, methane and ammonia emissions following slurry spreading on grassland. *Soil use and management* 22, 229-237.

#### **Chapter 28: Manure Analysis: A Strategy for Improved Nutrient Management and Sustainable Crop Production - Ken A. Smith and David R. Chadwick (Page 120)**

Anon. 2010. British Survey of Fertiliser Practice, reports available via: <http://statistics.defra.gov.uk/esg/bsfp.htm>

Chadwick D.R. and Chen S. 2003. Manures. In: Haygarth P.M. and Jarvis S.C. (eds.) *Agriculture, Hydrology and Water Quality*. pp.57-82. CAB International, Wallingford UK.

Chadwick D.R., Brookman S.K.E., Williams J., Smith K.A., Chambers B.J., Scotford I.M. and Cumby T.R. 2004. On-farm quick tests for manure. In "Advanced Silage Corn Management" Editors. S Bittman and C.G. Kowalenko. Pacific Field Corn Association, PO Box. 1000, Agassiz, BC V0M 1A0, Canada. pp.53-55.:<http://www.farmwest.com/index.cfm?method=library.showPage&librarypageid=136>

Chadwick D., Sommer S., Thorman R., Fanguero D., Cardenas L., Amon B. and Misselbrook T. 2011. Manure management: implications for greenhouse gas emissions. *Animal Science and Feed Technology* 166-167, 514-531.

Chambers B.J. 2004. Manure Analysis Database (MANDE) Defra contract NT2006, Final project report, March 2004, 43pp. (available via Defra website: <http://www.randd.defra.gsi.gov.uk/>)

Defra 2007. Market mechanisms for reducing GHG emissions from agriculture, forestry and land management. Report to Defra by NERA Economic Consulting, July 2007.

Lord E.I., Johnson P.A. and Archer J.R. 1999. Nitrate Sensitive Areas: A study of large-scale control of nitrate loss in England. *Soil Use and Management* 15, 201-207.

Malley D.F., McClure C., Martin P.D., Buckley K. and McCaughey W.P. 2005. Compositional analysis of cattle manure during composting using a field-portable NIRS. *Commun. Soil Sci Plant Anal*, 36: 455-475.

Matsunaka T., Saigusa T., Sasaki H., Matsumoto T., Kohyama K., Furudate A. and Miura S. 2011. AMAFE as a decision support system for good agricultural practice of animal manure application with less environmental impacts. Proceedings of 4<sup>th</sup> Asian Conference on Precision Agriculture, OBIHIRO, Japan, July 4-7, 2011. pp. O16-1-6.

Misselbrook T.H., Chadwick D.R., Gilhespy S.L., Chambers B.J., Smith K.A., Williams J. and Dragosits U. (2011) Inventory of ammonia emissions from UK agriculture 2010. Defra Contract AC0112, September 2011, 34pp.

Reeves III, J.B. and Van Kessel 2000. Near-infrared spectroscopic determination of carbon, total nitrogen, and ammonium-N in dairy manures. *J. Dairy Sci.* 83 (8) 1829-1836.

Reeves III, J.B. 2006. The present status of rapid methods for on-farm analysis of manure composition with emphasis on N and P: What is available and what is lacking? Vol I. Proceedings of the 12<sup>th</sup> International Conference of the FAO ESCORENA Network on Recycling of Agricultural, Municipal and Industrial Residues in Agriculture, RAMIRAN 2006, Aarhus, Denmark, pp 65-69.

Smith K.A., Farrington D., Shelley S., Lister S. and Hobbs P.J. 2005. Rapid, reduced cost analysis of manures by near-infrared spectroscopy. CSG15 Final Project Report, Defra Research Contract NT2508 (available via Defra website: <http://www.randd.defra.gsi.gov.uk/>)

Yagüe M.R. and Quilez D. 2011. Electrical conductivity of swine slurry at the appropriate dilution equals slurry ammonium-N concentration. *Journal of Environmental Quality* (in press).

#### **Chapter 29: Can Slurry Manure Replace Commercial Fertilizer? - Derek Hunt, Shabtai Bittman and C. Grant Kowalenko (Page 125)**

Bhandral R., Bittman S., Kowalenko C.G., Buckley K., Chantigny M.H., Hunt D.E., Bounaix F., Friesen A. 2009. Enhancing soil infiltration reduces gaseous emissions and improves N uptake from applied dairy slurry. *J. Env. Quality* 38:1372:1382

Bittman S., Hunt D.E., Kowalenko C.G., Chantigny M.H., Buckley K. and Bounaix F. 2011. Removing solids improves response of grass to surface-banded dairy manure slurry: a multi-year study. *J. Env. Quality* 40: 393-401

Bittman S., Liu A., Hunt D.E., Forge T.A., Kowalenko C.G., Chantigny M.H. and Buckley K. 2012. Precision placement of separated dairy sludge improves early phosphorus nutrition and growth in corn (*Zea mays* L.). *J. Env. Quality*. 41: 582-591.

Bittman S., Schmidt O. and Cramer T.N. 1999. Advanced Forage Management, PFCA Publication  
[www.famwest.com](http://www.famwest.com)

Bittman S., van Vliet L.J.P., Kowalenko C.G., McGinn S., Hunt D.E. and Bounaix F. 2005. Surface-banding liquid manure over aeration slots: a new low-disturbance method for reducing ammonia emissions and improving yield of perennial grasses *Agron. J.* 97:1304-1313.

Kowalenko C.G., Schmidt O. and Hughes-Games G.A. 2007. Fraser Valley Soil nutrient study 2005. A survey of the nitrogen, phosphorus, and potassium contents of the Lower Fraser Valley agricultural soils in relation to environment and agronomic concerns. (available online: [www.agr.gov.bc.ca](http://www.agr.gov.bc.ca))

Lau A.K., Bittman S. and Lemus G. 2003. Odor measurement for manure spreading using a subsurface deposition applicator. *Journal of Environmental Science & Health, Part B.* 38:233-240.

Sheppard S.C. and Bittman S. 2013 Estimated net application of ammoniacal and organic N from manure, and potential for mitigating losses of ammonia in Canada; *Agriculture, Ecosystems and Environment* 171 (2013) 90–102.

van Vliet L.J.P., Bittman S., Derksen G. and Kowalenko C.G. 2006. Aerating Grassland before Manure Application Reduces Runoff Nutrient Loads in a High Rainfall Environment, *Journal of Environmental Quality*, 35(3), p. 903-911  
Webb, J., Pain, B., Bittman, S., and Morgan, J. 2010. The impacts of manure application methods on emissions of ammonia, nitrous oxide and on crop response - a review. *Agric. Ecosys. and Env.* 137: 39-46

Webb J., Pain B., Bittman S. and Morgan J. 2010. The impacts of manure application methods on emissions of ammonia, nitrous oxide and on crop response - a review. *Agric. Ecosys. and Env.* 137: 39-46

**Chapter 30: Grass Height Affects Emission of Ammonia from Applied Broiler Manure - Shabtai Bittman, Derek Hunt, Anthony K. Lau and C. Grant Kowalenko (Page 134)**

Pote D.H., Way T.R., Kleinman P.J.A., Moore P.A., Meisinger J.J., Sistani K.R., Saporito L.S., Allen A.L. and Feyereisen G.W. 2011. Subsurface Application of Poultry Litter in Pasture and No-Till Soils. *J. Env. Quality* 40: 402-411

Sommer S.G., Friis E., Bach A. and Schjorring J.K. 1997. Ammonia volatilization from pig slurry applied with trail hoses or broadcast to winter wheat: effects of crop development stage microclimate and leaf ammonia absorption. *J. Environmental Quality* 26: 1153-1160.

**Chapter 31: Aerating Grassland Prior to Manure Application Reduces Runoff and Nutrient Loads - Derek Hunt, Shabtai Bittman, C. Grant Kowalenko and Laurens J.P. van Vliet (Page 135)**

Chambers P.A., Anderson A.M., Bernard C., Gregorich L.J., McConkey B., Milburn P.H., Painchaud J., Patni N.K., Simard R.R. and van Vliet L.J.P. 2000. Surface water quality. p. 43-60 In Coote, D.R. and L.J. Gregorich (ed.). *The health of our water - toward sustainable agriculture in Canada.* Publ. 2020/E. Research Branch, Agriculture and Agri-Food Canada, Ottawa, Ont.

Pote D.H., Kingery W.L., Aiken G.E., Han F.X., Moore P.A., Jr., and Buddington K. 2003. Water-quality effects of incorporating poultry litter into perennial grassland soils. *J. Environ. Qual.* 32:2392-2398.

Rodhe L. and Etana A. 2005. Performance of slurry injectors compared with band spreading on three Swedish soils and ley. *Biosystems Engin.* 92:107-118.

Shah S.B., Miller J.L. and Basden T.J. 2004. Mechanical aeration and liquid dairy manure application impacts on grassland runoff water quality and yield. *Trans. ASAE* 47:777-788.

Sharpley A., Meisinger J.J., Breeuwsma A., Sims J.T., Daniel T.C. and Schepers J.S. 1998. Impacts of animal manure management on ground and surface water quality. p.173-242 In J.L. Hatfield and B.A. Stewart (ed). *Animal waste utilization: effective use of manure as a soil resource*. Ann Arbor Press, Michigan.

van Vliet L.J.P., Bittman S., Derksen G. and Kowalenko C.G. 2006 Aerating grassland prior to manure application reduces runoff nutrient loads in a high rainfall environment. *J. Env. Qual.* 35: 903-911.

**Chapter 32: Long Term Effects of Manure - Derek Hunt, Shabtai Bittman, C. Grant Kowalenko, Tom Forge, Cynthia Grant, Eugene Gowalko and Dave Raworth (Page 136)**

Bittman S., Kowalenko C.G., Forge T., Hunt D.E., Bounaix F. and Patni N. 2007. Agronomic effects of multi-year surface-banding of dairy slurry on grass. *Bioresource Tech.* 98: 3249-3258.

Bittman S., Kowalenko C.G., Forge T., Hunt D.E., Bounaix F. and Patni N. 2007. Agronomic effects of multi-year surface-banding of dairy slurry on grass. *Bioresource Tech.* 98: 3249-3258.

Bittman S., Hunt D.E., Liu A., Grant C.A., Forge T.A. and Kowalenko C.G. 2010. Long term application of dairy slurry reduces Cd concentration in sunflower (*Helianthus annuus* L.) [www.ramiran.net](http://www.ramiran.net)

Del-Castilho P., Chardon W.J. and Salomons W. 1993. Influence of cattle-manure slurry application on the solubility of cadmium, copper, and zinc in a manured acidic, loamy-sand soil. *J. Environ. Qual.* 22: 689-697.

Grant C.A., Buckley W.T., Bailey L.D. and Selles F. 1998. Cadmium accumulation in crops. *Can. J. Plant Sci.* 78: 1-17.

Li Y., McCrory D.F., Powell J.M., Saam H. and Jackson-Smith D. 2005. A survey of selected heavy metal concentrations in Wisconsin dairy feeds. *J Dairy Science* 88: 2911-2922.

Meeus C., de Eduljee G.H. and Hutton M. 2002. Assessment and management of risks arising from cadmium in fertilizers. *Science Total Environment* 291: 167-187.

Mitchell L.G., Grant C.A. and Racz G.J. 2000. Effect of nitrogen application on concentration of cadmium and nutrient ions in soil solution and in durum wheat. *Can. J. Soil Sci.* 80: 107-115.

Webb J., Pain B., Bittman S. and Morgan J. 2010. The impacts of manure application methods on emissions of ammonia, nitrous oxide and on crop response - a review. *Agric. Ecosys. and Env.* 137: 39-46

**Chapter 33: Manure on Alfalfa - Michael Russelle and Bill Jokela (Page 144)**

Anonymous. 2006. Fertilizing alfalfa forage. Manitoba Agriculture, Agriculture and Agri-Food Canada, and Manitoba Forage Council. Available online: [www.gov.mb.ca/agriculture/crops/forages/pdf/bjb05s01.pdf](http://www.gov.mb.ca/agriculture/crops/forages/pdf/bjb05s01.pdf)

Barrington S.F., Jutras P.J. and Broughton R.S. 1987. The sealing of soil by manure. II. Sealing mechanisms. *Can. Agric. Eng.* 29:105-108.

Bittman S. 2009. Forage, phosphorus and soil on dairy farms. *Advances in Dairy Technology. Proc. Western Canadian Dairy Seminar* 21:333-347. Available online: [www.wcds.ca/proc/2009/Manuscripts/ForagePhosphorousAndSoil.pdf](http://www.wcds.ca/proc/2009/Manuscripts/ForagePhosphorousAndSoil.pdf)

- Bittman S., van Vliet L.J.P., Kowalenko C.G., McGinn S., Hunt D.E. and Bounaix F. 2005. Surface-banding liquid manure over aeration slots: A new low-disturbance method for reducing ammonia emissions and improving yield of perennial grasses. *Agron. J.* 97:1304–1313.
- Bowley S.R., Bowman A. and Hancock D. 2009. Evaluation of forage varieties for tolerance to management stress. Final report CORD IV Project to Ontario Forage Council. Available online: [www.ontarioforagecouncil.com/component/docman/doc\\_download/76-cordiv-report-bowley-26april2009.html](http://www.ontarioforagecouncil.com/component/docman/doc_download/76-cordiv-report-bowley-26april2009.html)
- Brewin D., Kulshreshtha S., Ominski K. and Tenuta M. 2008. Farm level and regional impacts of forage based manure management in Manitoba. Dept. of Agribusiness and Agric. Econ., Univ. of Manitoba. Available online: [umanitoba.ca/afs/ncl/EconomicsForageReport2008.pdf](http://umanitoba.ca/afs/ncl/EconomicsForageReport2008.pdf)
- Brown C. 2007. Manure on forages. p. 70-77 *In* Crop Advances: Field Crop Reports, Vol. 3. OMAFRA. Available online: [www.ontariosoilcrop.org/docs/CA\\_V3\\_2006.pdf](http://www.ontariosoilcrop.org/docs/CA_V3_2006.pdf)
- Daliparthi J., Herbert S.J., Moffitt L.J. and Veneman P.L.M. 1995. Herbage production, weed occurrence, and economic risk from dairy manure applications to alfalfa. *J. Prod. Agric.* 8:495-501.
- DEFRA. 2009. Protecting our Water, Soil and Air. A code of good agricultural practice for farmers, growers, and land managers. Dept. for Environment, Food and Rural Affairs. TSO, Norwich. Available online: [www.defra.gov.uk/publications/files/pb13558-cogap-090202.pdf](http://www.defra.gov.uk/publications/files/pb13558-cogap-090202.pdf)
- Entz M.H., Bullied W.J., Forster D.A., Gulden R. and Vessey J.K. 2001. Extraction of subsoil nitrogen by alfalfa, alfalfa–wheat, and perennial grass systems. *Agron. J.* 93:495–503.
- Gordon R., Patterson G., Harz T., Rodd V. and MacLeod J. 2000. Soil aeration for dairy manure spreading on forage: Effects on ammonia volatilisation and yield. *Can. J. Soil Sci.* 80:319-326.
- Hansen N.C. and Fuchs D. 2003. Dairy manure application methods and nutrient loss from alfalfa. Project summary. p. 65-68. Greenbook 2003. Minnesota Dept. of Agric., St. Paul, MN. Available online: [www.leg.state.mn.us/docs/2004/mandated/040445.pdf](http://www.leg.state.mn.us/docs/2004/mandated/040445.pdf)
- Hultgreen G. and Stock W. 1999. Injecting swine manure with minimum disturbance. Proceedings from 11th Annual Meeting, Conf. and Trade Show, Saskatchewan Soil Conservation Assoc., 17-18 Feb. 1999, Saskatoon, SK. Available online: [www.ssca.ca/conference/1999proceedings/Hultgreen.html](http://www.ssca.ca/conference/1999proceedings/Hultgreen.html)
- Ketterings Q.M., Cherney J.H., Czymmek K.J., Frenay E., Klausner S.D., Chase L.E. and Schukken Y.H. 2008. Manure use for alfalfa-grass production. Dept. of Animal Sci. Mimeo 231/Dept. of Crop Sci. Ext. Ser. E08-3. Cornell Univ. Available online: [nmsp.cals.cornell.edu/publications/files/Manureandalfalfa.pdf](http://nmsp.cals.cornell.edu/publications/files/Manureandalfalfa.pdf)
- Lamb J.F.S., Barnes D.K., Russelle M.P., Vance C.P., Heichel G.H. and Henjum K.I. 1995. Ineffectively and effectively nodulated alfalfas demonstrate biological nitrogen fixation continues with high nitrogen fertilization. *Crop Sci.* 35:153-157.
- Lamb J.F.S., Russelle M.P. and Schmitt M.A. 2005. Alfalfa and reed canarygrass response to midsummer manure application. *Crop Sci.* 45:2293-2300.
- Lawrence J.R., Ketterings Q.M. and Cherney J.H. 2008. Effect of nitrogen application on yield and quality of silage corn after forage legume-grass. *Agron. J.* 100:73-79.
- Lory J.A., Kallenbach R. and Roberts C. 2000. Managing manure on alfalfa hay. Univ. of Missouri Ext. Guide G4555.

- Maguire R.O., Kleinman P.J.A., Dell C.J., Beegle D.B., Brandt R.C., McGrath J.M. and Ketterings Q.M. 2011. Manure application technology in reduced tillage and forage systems: A review. *J. Environ. Qual.* 40:292-301.
- McBride R.A., McLaughlin N.B. and Veenhof D.W. 2000. Performance of wheel and track running gear on liquid manure spreaders. *Can. Agric. Eng.* 42:019-025.
- Min D.H., Vough L.R., Chekol T. and Kim D.A. 1999. Effects of surface-applied dairy slurry on herbage yield and stand persistence: II. Alfalfa, orchardgrass, tall fescue, and alfalfa-orchardgrass. *Asian-Aus. J. Anim. Sci.* 12:766-771.
- Olson B.M. and Papworth L.W. 2006. Soil chemical changes following manure application on irrigated alfalfa and rainfed timothy in southern Alberta. *Can. J. Soil Sci.* 86:119-132.
- Prairie Agricultural Machinery Institute (PAMI), Humboldt, Saskatchewan. Available online: [www.pami.ca/pdfs/reports\\_research\\_updates/pami751.pdf](http://www.pami.ca/pdfs/reports_research_updates/pami751.pdf)
- Prairie Agricultural Machinery Institute (PAMI). 2001. Is swine manure injection into alfalfa stands a good idea? PAMI Research Update 751.
- Pfluke P.D., Jokela W.E. and Bosworth S.C. 2011. Ammonia volatilization from surface-banded and broadcast application of liquid dairy manure on grass forage. *J. Environ. Qual.* 40:374-382.
- Powell J.M., Russelle M.P. and Martin N.P. 2010. The United States: Trends in the dairy industry and their implications for producers and the environment. p. 115-139. *In* Pierre Gerber et al. (Ed.) *Livestock in a Changing Landscape*. Vol 2. Experiences and regional perspectives. Island Press, Washington, DC.
- Russelle M.P. 1997. Nutrient management of humid, temperate region forages: Recommendations and practices. p. 195-206. XVIII International Grassland Congr., 8-19 June 1997, Winnipeg and Saskatoon, Canada. Available online: [www.internationalgrasslands.org/files/igc/publications/1997/iii-195.pdf](http://www.internationalgrasslands.org/files/igc/publications/1997/iii-195.pdf)
- Russelle M., Blanchet K., Randall G. and Everett L. 2008. Nitrogen availability from liquid swine and dairy manure: Results of on-farm trials in Minnesota. Univ. of Minnesota Extension. No. 08583. Available online: [www.extension.umn.edu/distribution/livestocksystems/DI8583.html](http://www.extension.umn.edu/distribution/livestocksystems/DI8583.html)
- Russelle M.P., Blanchet K.M., Randall G.W. and Everett L.A. 2009. Characteristics and nitrogen value of stratified bedded pack dairy manure. *Crop Management*. Online doi: 10.1094/CM-2009-0717-01-RS.
- Russelle M.P., Entz M.H. and Franzluebbers A.J. 2007a. Reconsidering integrated crop-livestock systems in North America. *Agron. J.* 99:325-334.
- Russelle M.P., Lamb J.S.F., Turyk N.B., Shaw B.H. and Pearson B. 2007b. Managing nitrogen contaminated soils: Benefits of N<sub>2</sub>-fixing alfalfa. *Agron. J.* 99:738-746.
- Saam H., Powell J.M., Jackson-Smith D.B., Bland W.L. and Posner J.L. 2005. Use of animal density to estimate manure nutrient recycling ability of Wisconsin dairy farms. *Agric. Systems* 84:343-357.
- Salmerón M., Cavero J., Delgado I. and Isla R. 2010. Yield and environmental effects of summer pig slurry applications to irrigated alfalfa under Mediterranean conditions. *Agron. J.* 102:559-567.
- van Vliet L.J.P., Bittman S., Derksen G. and Kowalenko C.G. 2006. Aerating grassland before manure application reduces runoff nutrient loads in a high rainfall environment. *J. Environ. Qual.* 35:903-911.

- Webb J., Pain B., Bittman S. and Morgan J. 2010. The impacts of manure application methods on emissions of ammonia, nitrous oxide and on crop response – A review. *Agric. Ecosys. Environ.* 137:39-46.
- Wightman P.S., Franklin M.F. and Younie D. 1997. The effect of sward height on response of mini-swards of perennial ryegrass and white clover to slurry application. *Grass Forage Sci.* 52:42-51.
- Williams M.R., Feyereisen G.W., Beegle D.B., Shannon R.D., Folmar G.J. and Bryant R.B. 2010. Manure application under winter conditions: Nutrient runoff and leaching losses. ASABE Paper No. 1009194. Available online: [asae.frymulti.com/azdez.asp?JID=5&AID=29826&CID=pitt2010&T=2](http://asae.frymulti.com/azdez.asp?JID=5&AID=29826&CID=pitt2010&T=2)
- Wilson C., Undi M., Tenuta M., Tremorin D., Coppi L., Flaten D., Wittenberg K.M. and Ominski K.H. 2011. Utilization of liquid hog manure to fertilize grasslands in southeast Manitoba: Impact of application timing and forage harvest strategy on nutrient utilization and accumulation. *Nutr. Cycl. Agroecosyst.* 91:155-171.
- Young R.A. and Mutchler C.K. 1976. Pollution potential of manure spread on frozen ground. *J. Environ. Qual.* 5:174-179.
- Chapter 34: Is Manure Application on Alfalfa a Good Idea? Ontario Experience - Bonnie Ball and Christine Brown (Page 148)**
- International Plant Nutrition Institute (IPNI). 2011. Soil test levels in North America 2010. IPNI Publ. No 30-3110.
- Undersander D.J., Howard W.T. and Shaver R.D. 1993. Milk per acre spreadsheet for combining yield and quality into a single term. *J. Prod. Agric.* 6, 231–235
- Chapter 35: Manure Concerns—Pathogens, Antibiotics, and Other Chemicals - Michael Russelle (Page 150)**
- Alexander T.W., Reuter T., Sharma R., Yanke L.J., Topp E. and McAllister T.A. 2009. Longitudinal characterization of resistant *Escherichia coli* in fecal deposits from cattle fed subtherapeutic levels of antimicrobials. *Appl. Environ. Microbiol.* 75:7125-7134.
- Ceotto E. and Spallacci P. 2006. Pig slurry applications to alfalfa: Productivity, solar radiation utilization, N and P removal. *Field Crops Res.* 95:135-155.
- Colburn C.C., vom Saal F.S. and Soto A.M. 1993. Developmental effects of endocrine-disrupting chemicals in wildlife and humans. *Environ. Health Perspectives* 101:378–384.
- Dolliver H. and Gupta S. 2008. Antibiotic losses in leaching and surface runoff from manure-amended agricultural land. *J. Environ. Qual.* 37:1227-1237.
- Durkin P.R. 2007. Aminopyralid: Human health and ecological risk assessment – Final report. SERA TR-052-04-04a. Available online: [fs.usda.gov/Internet/FSE\\_DOCUMENTS/stelprdb5211432.pdf](http://fs.usda.gov/Internet/FSE_DOCUMENTS/stelprdb5211432.pdf)
- Goss M. and Richards C. 2008. Development of a risk-based index for source water protection planning, which supports the reduction of pathogens from agricultural activity entering water resources. *J. Environ. Manag.* 87:623-632.
- Habteselassie M.Y., Bischoff M., Applegate B., Reuhs R. and Turco R.F. 2010. Understanding the role of agricultural practices in the potential colonization and contamination by *Escherichia coli* in the rhizospheres of fresh produce. *J. Food Prod.* 73:2001-2009.
- Hakk H., Millner P. and Larsen G. 2005. Decrease in water-soluble 17 $\beta$ -estradiol and testosterone in composted poultry manure with time. *J. Environ. Qual.* 34:943–950.

- Heuer H., Schmitt H. and Smalla K. 2011. Antibiotic resistance gene spread due to manure application on agricultural fields. *Current Opinion Microbiol.* 14:236-243.
- Hoorman J.J., Rausch J.N. and Brown L.C. 2008. Guidelines for applying liquid animal manure to cropland with subsurface and surface drains. The Ohio State University Extension. Agriculture and Natural Resources Fact Sheet ANR-21-09. Available online: [ohioline.osu.edu/anr-fact/pdf/0021.pdf](http://ohioline.osu.edu/anr-fact/pdf/0021.pdf)
- Kjær J., Olsen P., Back K., Barlebo H.C, Ingerslev F., Hansen M. and Sørensen B.H. 2007. Leaching of estrogenic hormones from manure-treated structured soils. *Environ. Sci. Technol.* 41:3911-3917.
- Kumar K., Gupta S.C., Chander Y. and Singh A.K. 2005. Antibiotic use in agriculture and its impact on the terrestrial environment. *Adv. Agron.* 87:1–54.
- Peterson E.W., Wicks C.M. and Kelley C.A. 2005. Persistence of 17 $\beta$ -estradiol in water and sediment-pore water from cave streams in central Missouri. *Environ. Eng. Geosci.* 11:221-228.
- Salgado M., Collins M.T., Salazar F., Kruze J., Bölske G., Söderlund R., Juste R., Sevilla I.A., Biet F., Troncoso F. and Alfaro M. 2011. Fate of *Mycobacterium avium* subsp. *paratuberculosis* after application of contaminated dairy cattle manure to agricultural soils. *Appl. Environ. Microbiol.* 77:2122-2129.
- Sarmah A.K., Meyer M.T. and Boxall A.B.A. 2006. A global perspective on the use, sales, exposure pathways, occurrence, fate and effects of veterinary antibiotics (VAs) in the environment. *Chemosphere* 65:725-759.
- Shore L.S. and Casey F.X.M. 2009. Transport of steroids in soil under field conditions. In: L.S. Shore and A. Pruden (Eds.) *Hormones and Pharmaceuticals Generated by Concentrated Animal Feeding Operations. Emerging Topics in Toxicology* 1:37-46.
- Shore L.S., Kapulnik Y., Ben-Dov B., Fridman Y., Weninger S. and Shemesh M. 1992. Effects of estrogen and 17 $\beta$ -estradiol on vegetative growth of *Medicago sativa*. *Physiol. Plant.* 84:217–297.
- Song W., Ding Y., Chiou C.T. and Li H. 2010. Selected veterinary pharmaceuticals in agricultural water and soil from land application of animal manure. *J. Environ. Qual.* 39:1211-1217.
- Storteboom H.N., Kim S.C., Doesken K.C., Carlson K.H., Davis J.G. and Pruden A. 2007. Response of antibiotics and resistance genes to high intensity and low-intensity manure management. *J. Environ. Qual.* 36:1695–1703.
- Thomas E.D. 2011. Manure management and Johne's disease. *Johne's disease – dairy.* 3(4):2-3. Available online: [datcp.wi.gov/uploads/Animals/pdf/WIJohnesNewsletterDairySummer11.pdf](http://datcp.wi.gov/uploads/Animals/pdf/WIJohnesNewsletterDairySummer11.pdf)
- Thorpe K.L., Cummings R.I., Hutchinson T.H., Scholze M., Brighty G., Sumpter J.P. and Tyler C.R. 2003. Relative potencies and combination effects of steroidal estrogens in fish. *Environ. Sci. Technol.* 37: 1142-1149.
- Thorpe K.L., Maack G., Benstead R. and Tyler C.R. 2009. Estrogenic wastewater treatment works effluents reduce egg production in fish. *Environ. Sci. Technol.* 43:2976–2982.
- USEPA. 2011. Aminopyralid in manure and compost. U.S. Environmental Protection Agency Factsheet. Available online: [www.epa.gov/opprd001/factsheets/aminopyralidcompost.pdf](http://www.epa.gov/opprd001/factsheets/aminopyralidcompost.pdf)
- Whittington R.J., Marshall D.J., Nicholls P.J., Marsh I.B. and Reddacliff L.A. 2004. Survival and dormancy of *Mycobacterium avium* subsp. *paratuberculosis* in the environment. *Appl. Environ. Microbiol.* 70:2989-3004.



## Chapter 36: Fertilizing Grass with Municipal Biosolids - Dan M. Sullivan (Page 152)

### For More Information - Extension publications

PNW 508. Fertilizing with Biosolids.

PNW 511. Worksheet for Calculating Biosolids Application Rates in Agriculture.

### Research

Cogger, C.G., A.I. Bary, E.A. Myhre and A-M. Fortuna. 2013 (*changed from 2012 in text*). Biosolids applications to tall fescue have long-term influence on soil nitrogen, carbon, and phosphorus. *J. Environ. Qual.* 42:516–522.

Cogger, C.G. and D.M. Sullivan. 2007. Worksheet for calculating biosolids application rates in agriculture. *Pacific Northwest Extension Publ.* 511-E. Washington State University Cooperative Extension, Pullman, WA.

Cogger, C.G., A.I. Bary, D.M. Sullivan and E.A. Myhre. 2004. Biosolids processing effects on first and second year available nitrogen. *Soil Sci. Soc. Am J.* 68: 162-167.

Cogger, C.G., A.I. Bary, S.C. Fransen and D.M. Sullivan. 2001. Seven years of biosolids vs. inorganic nitrogen applications to tall fescue. *J. Environ. Qual* 30: 2188-2194.

Sullivan, D.M., S.C. Fransen, C.G. Cogger, and A.I. Bary. 1997. Biosolids and dairy manure as nitrogen sources for prairiegrass on poorly drained soil. *J. Prod. Agric.* 10:589-596.

### Extension publications discussing biosolids benefits, contaminant risk, and regulations

American Society for Microbiology. 2011. Land Application of Organic Residuals: Public Health Threat or Environmental Benefit? <http://www.asm.org/index.php/component/content/article?id=7489:biorep8-2011>

Evanylo, G.K. 2009. Agricultural Land Application of Biosolids in Virginia: Risks and Concerns. Publication 452-304. Virginia Cooperative Extension.

Jacobs, L. W. and D. S. McCreary. 2001. Utilizing biosolids on agricultural land. Bull E-2781. Michigan State University Extension. <http://fieldcrop.msu.edu/uploads/documents/E2781.pdf>

Stehouwer, R. 2003. Land Application of Sewage Sludge in Pennsylvania: Effects of Biosolids on Soil and Crop Quality. Penn State University Cooperative Extension. <http://extension.psu.edu/cmeg/facts/biosolids-and-soil-quality.pdf>

Stehouwer, R. 1999. Land Application of Sewage Sludge in Pennsylvania: Biosolids Quality. Penn State University Cooperative Extension. <http://extension.psu.edu/cmeg/facts/biosolids-quality.pdf>

### Biosolids Regulation: Canada and USA

British Columbia Ministry of Environment, Lands and Parks. 2002. Organic matter recycling regulation. B.C. Reg. 18/2002. O.C. 84/2002. includes amendments up to B.C. Reg. 198/2007, June 30, 2007. [Online]. [http://www.bclaws.ca/EPLibraries/bclaws\\_new/document/ID/freeside/18\\_2002](http://www.bclaws.ca/EPLibraries/bclaws_new/document/ID/freeside/18_2002)

Canadian Food Inspection Agency. 1997. Standards for metals in fertilizers and supplements: Trade memorandum T-4-93. [Online]. Section 3.7.2.1 Metal Standards. <http://www.inspection.gc.ca/english/plaveg/fereng/guide/regguide.shtml>

USEPA. 1995. A Guide to Biosolids Risk Assessments for the EPA Part 503 rule. EPA/832-B-93-005.

## FORAGE QUALITY & FEEDING

### Chapter 37: Best Tools for Predicting Forage Harvest Timing to Optimize Yield and Nutritive Value - R. Mark Sulc (Page 160)

- Allen M. and Beck J. 1996. Relationship between spring harvest alfalfa quality and growing degree days. p.16-25. In Proc. Twenty-sixth National Alfalfa Symposium, East Lansing, MI. 4-5 March 1996. Certified Alfalfa Seed Council, Davis, CA.
- Allen M.S., O'Neil K.A., Dado R.G. and Kohn R.A. 1992. Variation in fiber content and fiber digestibility of alfalfa and corn forages. p.21-30 *In Proc. Tri-State Dairy Nutrition Conf.*, Fort Wayne, IN. 20-21 May 1992. The Ohio State University, Columbus, OH.
- Cherney J.H. 1995. Spring alfalfa harvest in relation to growing degree days. *In Proc. Twenty-fifth National Alfalfa Symposium*, Syracuse, NY. 27-28 Feb. 1995. Certified Alfalfa Seed Council, Davis, CA.
- Cherney J.H., Parsons D. and Cherney D.J.R. 2011. A method for forage yield and quality assessment of tall fescue cultivars in the spring. *Crop Sci.* 51:2878-2885.
- Cherney J.H. and Sulc R.M. 1997. Predicting first cutting alfalfa quality. p.53-66 *In Silage: Field to Feedbunk. Proc. Silage: Field to Feedbunk North Amer. Conf.*, Hershey, PA. 11-13 Feb. 1997. NRAES-99. Northeast Regional Agric. Eng. Serv., Ithaca, NY.
- Digman M. and Shinnars K. 2012. Calibrating your forage harvester's yield monitor. *In Progressiv Forage Harvester*. 31 January 2012. Progressive Publishing. Available online at [http://www.progressiveforage.com/index.php?option=com\\_content&view=article&id=4337:calibrating-your-forage-harvesters-yield-monitor&catid=90:equipment&Itemid=124](http://www.progressiveforage.com/index.php?option=com_content&view=article&id=4337:calibrating-your-forage-harvesters-yield-monitor&catid=90:equipment&Itemid=124).
- Ferraro F.P., Nave R.L.G., Sulc R.M. and Barker D.J. 2012. Seasonal variation in the rising plate meter calibration for forage mass. *Agron J.* 104:1-6.
- Fick G.W. and Onstad D.W. 1988. Statistical models for predicting alfalfa herbage quality from morphological or weather data. *J. Prod. Agric.* 1:160-166.
- Fick G.W., Wilkens P.W. and Cherney J.H. 1994. Modeling forage quality changes in the growing crop. pp. 757-795 *In* (G.C. Fahey, ed.) *Forage Quality, Evaluation, and Utilization*. ASA, CSSA, SSSA.
- Hakl J., Santrucek J., Fuksa P. and Krajic L. 2010. The use of indirect methods for the prediction of Lucerne quality in the first cut under the conditions of Central Europe. *Czech Journal of Animal Science* 55:258-265.
- Hintz R.W. and Albrecht K.A. 1991. Prediction of alfalfa chemical composition from maturity and plant morphology. *Crop Sci.* 31:1561-1565.
- King W. McG., Rennie G.M., Dalley D.E., Dynes R.A. and Upsdell M.P. 2010. Pasture mass estimation by the C-DAX pasture meter: regional calibrations for New Zealand. p. 233-238. *In Proc. 4<sup>th</sup> Australasian Dairy Science Symp.*, Lincoln, NZ. 31 Aug.-2 Sept. 2010. Caxton Press, Christchurch, NZ.
- Lawrence H., Yule I. and Murray R. 2007. Pasture monitoring technologies. *Proc. South Island Dairy Event Conf.* 8:126-131. Available at

[http://www.side.org.nz/IM\\_Custom/ContentStore/Assets/8/33/4c28f0d5b839cec6675252474e05188c/Pasture%20monitoring%20technologies.pdf](http://www.side.org.nz/IM_Custom/ContentStore/Assets/8/33/4c28f0d5b839cec6675252474e05188c/Pasture%20monitoring%20technologies.pdf).

Lile J.A., Blackwell M.B., Thomson N.A., Penno J.W., Macdonald K.A., Nicholas P.K., Lancaster J.A.S. and Coulter M. 2001. Practical use of the rising plate meter (RPM) on New Zealand dairy farms. Proc. N.Z. Grassl. Assoc. 63:159-164.

Litherland A.J., Webby R., Fraser T.J., Matthew C., McCleod K., Walcroft J., Bryant J., Devantier B., Hoogendoorn C.J., Moss R., Clarke-Hill W.J. and Schreurs P.J. 2008. Indirect measurement of pasture mass and pasture growth rate on sheep and beef pastures. Proc. New Zealand Grassl. Assoc. 70:137-144.

Nave R.L.G., Sulc R.M. and Barker D.J. 2013. Relationships of forage nutritive value to cool-season grass canopy characteristics. Crop Sci. 53:341-348.

Owens V. N., Albrecht K.A. and Hintz R.W. 1995. A rapid method for predicting alfalfa quality in the field. J. Prod. Agric. 8:491-495.

Parsons D., Cherney J.H. and Gauch H.G. 2006a. Estimation of spring forage quality for alfalfa in New York State. Forage Grazingl. doi:10.1094/FG-2006-0323-01-RS (available at <http://www.plantmanagementnetwork.org/pub/fg/research/2006/alfalfa/>).

Parsons D., Cherney J.H. and Gauch H.G. 2006b. Estimation of preharvest fiber content of mixed alfalfa–grass stands in New York. Agron. J. 98:1081–1089.

Parsons D., Cherney J.H. and Peterson P.H. 2009. Preharvest neutral 1 detergent fiber concentration of alfalfa as influenced by stubble height. Agron. J. 101:769–774.

Parsons D., McRoberts K.C, Cherney J.H., Cherney D.J.R., Bosworth S.C. and Jimenez-Serrano F.R. 2012. Preharvest neutral detergent fiber concentration of temperate perennial grasses as influenced by stubble height. Crop Sci. 52:(in press).

Sanderson M.A. 1992. Predictors of alfalfa forage quality: Validation with field data. Crop Sci. 32:245-250.

Sulc R.M., Albrecht K.A., Cherney J.H., Hall M.H., Mueller S.C. and Orloff S.B. 1997. Field testing a rapid method for estimating alfalfa quality. Agron. J. 89:952-957.

Van Soest P.J. 1996. Environment and forage quality. In Proc. of 58th Cornell Nutrition Conf., Ithaca, NY, Oct. 22-24, 1996. p. 1-9.

**Chapter 38: About Tillers, Maturity and Forage Quality - Shabtai Bittman, Derek Hunt and Mary Lou Swift (Page 164)**

Bittman S., Mir, Z. and McCartney, D.H. 1989. Proportion of leaves and floral tillers and nutritional quality of prolific and non-prolific seed yielding cultivars of smooth brome grass. Proceedings XVI International Grassland Congress, Nice, France pp. 829-830.

Bittman, S. Simpson, G.M. and Mir, Z. 1988. Leaf senescence and seasonal decline in nutritional quality of three temperate forage grasses as influenced by drought. Crop. Sci. 28: 546-552.

**Chapter 39: The Conundrum of Forage Fiber in Dairy Rations - Peter H. Robinson (Page 167)**

No references.

**Chapter 40: Forages for Cows in the Transition Period - Gaëtan F. Tremblay, Gilles Bélanger, Sophie Pelletier, Edith Charbonneau, Masahito Oba, Doris Pellerin and Guy Allard (Page 171)**

**Cited References:**

Bélanger G., Tremblay G.F. and Mongrain D. 2008. Yield and nutritive value of the spring growth of an ageing timothy sward. *Can. J. Plant Sci.* 88: 457-464.

Pelletier S., Bélanger G., Tremblay G.F., Bréard A. and Allard G. 2006. Dietary cation-anion difference of timothy as affected by development stage and nitrogen and phosphorus fertilization. *Agron. J.* 98: 774-780.

Penner G.B., Tremblay G.F., Dow T. and Oba M. 2008. Timothy hay with a low dietary cation-anion difference improves calcium homeostasis in periparturient Holstein cows. *J. Dairy Sci.* 91: 1959-1968.

Tremblay G.F., Bélanger G., Pelletier S., Lajeunesse J. and Pageau D. 2013. Dietary cation–anion difference of forage species after chloride fertilization. *Agronomy Journal* (to be published).

Tremblay G.F., Brassard H., Bélanger G., Seguin P., Drapeau R., Bréard A., Michaud R. and Allard G. 2006. Dietary cation anion difference (DCAD) of five cool-season grasses. *Agron. J.* 98: 339-348.

**Recent Canadian research:**

Allard G., Pellerin D., Bélanger G., Michaud R., Tremblay G., Drapeau R., Bréard A., Charbonneau E., Chouinard Y., Pelletier S., Brassard H., Fournier A., Lefebvre D. and Seguin P. 2005. Foin pour vaches taries, une solution québécoise! Symposium sur les bovins laitiers, October 25, pp. 25-47.

Charbonneau E., Chouinard P.Y., Tremblay G.F., Allard G. and Pellerin D. 2008. Hay to reduce dietary cation-anion difference for dry dairy cows. *J. Dairy Sci.* 91: 1585-1596.

Charbonneau E., Chouinard P.Y., Tremblay G.F., Allard G. and Pellerin D. 2009. Timothy silage with low Dietary Cation-Anion Difference fed to non lactating cows. *J. Dairy Sci.* 92: 2067-2077.

Charbonneau E., Pellerin D. and Oetzel G.R. 2006. Impact of lowering dietary cation-anion difference in nonlactating dairy cows: A Meta-Analysis. *J. Dairy Sci.* 89: 537-548.

Charbonneau E., Tremblay G.F., Chouinard P.Y., Allard G. and Pellerin D. 2009. Des fourrages pour prévenir la fièvre du lait / Feeding forages to prevent milk fever. Proceedings of the 45<sup>th</sup> Eastern Nutrition Conference organized by the Animal Nutrition Association of Canada (ANAC), 13 and 14 May, Québec, p. 133-146.

Heron V.S., Tremblay G.F. and Oba M. 2009. Timothy hays differing in dietary cation-anion difference affect the capability of dairy cows to maintain their calcium homeostasis. *J. Dairy Sci.* 92: 238-246.

Oba M., Oakley A.E. and Tremblay G.F. 2011. Dietary Ca concentration to minimize the risk of hypocalcemia in dairy cows is affected by the dietary cation-anion difference. *Anim. Feed Sci. Technol.* 164: 147-153.

Pelletier S., Bélanger G., Tremblay G.F., Chantigny M.H. and Allard G. 2008. Dietary cation-anion difference and tetany index of timothy forage fertilized with liquid swine manure. *Agron. J.* 100: 213-220.

Pelletier S., Bélanger G., Tremblay G.F., Seguin P., Drapeau R. and Allard G. 2007. Dietary cation-anion difference of timothy (*Phleum pratense* L.) as influenced by chloride and nitrogen fertilizer. *Grass Forage Sci.* 62: 66-77.

Pelletier S., Simpson R., Randall P., Bélanger G., Tremblay G.F., Seguin P., Drapeau R. and Allard G. 2007. Dietary cation-anion difference and cadmium concentration in grasses fertilized with chloride. *Grass Forage Sci.* 62: 416-428.

- Pelletier S., Simpson R.J., Culvenor R.A., Bélanger G., Tremblay G.F., Allard G., Braschkat J. and Randall P.J. 2008. Dietary cation-anion differences in some pasture species, changes during the season and effects of soil acidity and lime amendment. *Australian Journal of Experimental Agriculture* 48: 1143-1153.
- Pelletier S., Tremblay G.F., Bélanger G., Chantigny M.H., Seguin P., Drapeau R. and Allard G. 2008. Nutritive value of timothy fertilized with Cl or Cl-containing liquid swine manure. *J. Dairy Sci.* 91: 713-721.
- Pelletier S., Tremblay G.F., Bélanger G., Seguin P., Drapeau R. and Allard G. 2008. Delayed harvest affects mineral and NDF concentrations, and digestibility of timothy. *Can. J. Anim. Sci.* 88: 325-329.
- Tremblay G.F., Nie Z., Bélanger G., Pelletier S. and Allard G. 2009. Predicting timothy mineral concentration, dietary cation-anion difference, and grass tetany index by near-infrared reflectance spectroscopy. *J. Dairy Sci.* 92: 4499-4506.

**Chapter 41: Lower DCAD Values in a Tall Fescue Variety Selected for Low Grass Tetany - Derek Hunt, Shabtai Bittman and Mary Lou Swift (Page 175)**

- Mayland H.F. and Sleper D.A. 1993. Developing a Tall Fescue for Reduced Grass Tetany Risk, Proc. 17th Int. Grassland Congress, Palmerston North, NZ, Feb. 13–16, 1993; Baker, M.J., Ed.; NZ Grassl. Assoc.: Palmerston North, 1993; 1095–1096.
- Sleper D.A., Vogel K.P., Asay K.H. and Mayland H.F. 1989. Using plant breeding and genetics to overcome the incidence of grass tetany. *J. Anim. Sci.* 1989, 67, 3456–3462.
- Swift M.L., Bittman S., Hunt D.E. and Kowalenko C.G. 2007. The Effect of Formulation and Amount of Potassium Fertilizer on Macromineral Concentration and Cation-Anion Difference in Tall Fescue. *J. Dairy Sci.* 2007. 90:1063-1072.

**Chapter 42: Taking Advantage of Diurnal Shifts in the Nutritive Value of Forages - Robert Berthiaume, Gaëtan F. Tremblay, Gilles Bélanger, Carole Lafrenière, Annick Bertrand, Yves Castonguay, Réal Michaud and Guy Allard (Page 176)**

- Bélanger G., Morin C., Tremblay G.F., Bertrand A., Castonguay Y., Michaud R., Berthiaume R. and Allard G. 2009. Diurnal variation of non structural carbohydrate concentrations in alfalfa and timothy. Communication scientifique présentée au ASA-CSSA-SSSA International Annual Meetings, 1-5 nov., Pittsburgh, PA. Abstract 77-4. <http://a-c-s.confex.com/crops/2009am/webprogram/Paper54687.html>
- Berthiaume R., Benchaar C., Chaves A.V., Tremblay G.F., Castonguay Y., Bertrand A., Bélanger G., Michaud R., Lafrenière C., McAllister T.A. and Brito A.F. 2010. Effects of nonstructural carbohydrate concentration in alfalfa on fermentation and microbial protein synthesis in continuous culture. *J. Dairy Sci.* 93: 693-700.
- Bertrand A., Tremblay G.F., Pelletier S., Castonguay Y. and Bélanger G. 2008. Yield and nutritive value of timothy as affected by temperature, photoperiod and time of harvest. *Grass Forage Sci.* 63: 421-432.
- Brito A.F., Tremblay G.F., Bertrand A., Castonguay Y., Bélanger G., Michaud R., Lapierre H., Benchaar C., Petit H.V., Ouellet D.R. and Berthiaume R. 2008. Alfalfa cut at sundown and harvested as baleage improves milk yield of late-lactating dairy cows. *J. Dairy Sci.* 91: 3968-3982.
- Brito A.F., Tremblay G.F., Lapierre H., Bertrand A., Castonguay Y., Bélanger G., Michaud R., Benchaar C., Ouellet D.R. and Berthiaume R. 2009. Alfalfa cut at sundown and harvested as baleage increases bacterial protein synthesis in late-lactation dairy cows. *J. Dairy Sci.* 92: 1092-1107.

- Chouinard-Michaud C., Michaud R., Castonguay Y., Bertrand A., Belanger G., Tremblay G.F., Berthiaume R. and Allard G. 2010. Time of cutting and genetic selection affect non structural carbohydrates and some attributes of nutritive value in alfalfa. Scientific poster presented at the 2010 ASA-CSSA-SSSA International Annual Meetings, 31 Oct. – 3 Nov., Long Beach, CA. Abstract 187-11.
- Morin C., Bélanger G., Tremblay G.F., Bertrand A., Castonguay Y., Drapeau R., Michaud R., Berthiaume R. and Allard G. 2011. Diurnal variations of non structural carbohydrates and nutritive value in alfalfa. *Crop Sci.* 51: In press.
- Nie Z., Tremblay G.F., Bélanger G., Berthiaume R., Castonguay Y., Bertrand A., Michaud R., Allard G. and Han J. 2009a. Near infrared reflectance spectroscopy prediction of neutral detergent soluble carbohydrates in timothy and alfalfa. *J. Dairy Sci.* 92: 1702-1711.
- Nie Z., Tremblay G.F., Bélanger G., Berthiaume R., Castonguay Y., Bertrand A., Michaud R., Allard G. and Han J. 2009b. Carbohydrates in alfalfa-timothy mixtures predicted with near infrared reflectance spectroscopy equations developed for single species. *Can. J. Anim. Sci.* 89: 279-283.
- Pelletier S., Tremblay G.F., Lafrenière C., Bertrand A., Bélanger G., Castonguay Y. and Rowsell J. 2009. Nonstructural carbohydrate concentrations in timothy as affected by N fertilization, stage of development, and time of cutting. *Agron. J.* 101 : 1372-1380.
- Pelletier S., Tremblay G.F., Bélanger G., Bertrand A., Castonguay Y., Pageau D. and Drapeau R. 2010a. Forage nonstructural carbohydrates and nutritive value as affected by time of cutting and species. *Agron. J.* 102: 1388-1398.
- Pelletier S., Tremblay G.F., Bertrand A., Bélanger G., Castonguay Y. and Michaud R. 2010b. Drying procedures affect non-structural carbohydrates and other nutritive value attributes in forage samples. *Anim. Feed Sci. Technol.* 157: 139-150.
- Tremblay G.F., Morin C., Belanger G., Bertrand A., Castonguay Y., Michaud R. and Allard G. 2010. Non structural carbohydrate concentrations during wilting of PM- and AM-cut alfalfa. Scientific poster presented at the 2010 ASA-CSSA-SSSA International Annual Meetings, 31 Oct. – 3 Nov., Long Beach, CA. Abstract 293-11.

**Chapter 43: Increasing Non-Structural Carbohydrates in Forages - Gilles Bélanger, Gaëtan F. Tremblay, Robert Berthiaume, Annick Bertrand, Yves Castonguay, Réal Michaud and Guy Allard (Page 180)**

**Cited References :**

- Morin C., Bélanger G., Tremblay G.F., Bertrand A., Castonguay Y., Drapeau R., Michaud R., Berthiaume R. and Allard G. 2011. Diurnal variations of non structural carbohydrates and nutritive value in alfalfa. *Crop Sci.* 51: 1297-1306.
- Morin, C., G. F. Tremblay, G. Bélanger, A. Bertrand, Y. Castonguay, R. Drapeau, R. Michaud, R. Berthiaume, and G. Allard. 2012. Nonstructural carbohydrates concentration during field wilting of PM- and AM-cut alfalfa. *Agron. J.* 104:649-660.
- Pelletier S., Tremblay G.F., Bélanger G., Bertrand A., Castonguay Y., Pageau D. and Drapeau R. 2010. Forage nonstructural carbohydrates and nutritive value as affected by time of cutting and species. *Agron. J.* 102: 1388-1398.

**Additional research:**

- Bertrand A., Tremblay G.F., Pelletier S., Castonguay Y. and Bélanger G. 2008. Yield and nutritive value of timothy as affected by temperature, photoperiod and time of harvest. *Grass Forage Sci.* 63: 421-432.

- Burns J.C., Mayland H.F. and Fisher D.S. 2005. Dry matter intake and digestion of alfalfa harvested at sunset and sunrise. *J. Anim. Sci.* 83: 262-270.
- Burns J.C., Fisher D.S. and Mayland H.F. 2007. Diurnal shifts in nutritive value of alfalfa harvested as hay and evaluated by animal intake and digestion. *Crop Sci.* 47:2190-2197.
- Drapeau R., Bélanger G., Tremblay G.F. and Michaud R. 2007. Yield, persistence, and nutritive value of autumn-harvested tall fescue. *Can. J. Plant Sci.* 87: 67-75.
- Fisher D.S., Mayland H.F. and Burns J.C. 1999. Variation in ruminant's preference for tall fescue hays cut either at sundown or at sunup. *J. Anim. Sci.* 77:762-768.
- Fisher D.S., Mayland H.F. and Burns J.C. 2002. Variation in ruminant preference for alfalfa hays cut at sunup and sundown. *Crop Sci.* 42:231-237.
- Humphreys M.O. 1989. Water-soluble carbohydrates in perennial ryegrass breeding. II. Cultivar and hybrid progeny performance in cut plots. *Grass Forage Sci.* 44: 237-244.
- Pelletier S., Tremblay G.F., Lafrenière C., Bertrand A., Bélanger G., Castonguay Y. and Rowsell J. 2009. Nonstructural carbohydrate concentrations in timothy as affected by N fertilization, stage of development, and time of cutting. *Agron. J.* 101 : 1372-1380.
- Tremblay G.F., Bélanger G. and Drapeau R. 2005. Nitrogen fertilizer application and developmental stage affect silage quality of timothy (*Phleum pratense* L.). *Grass Forage Sci.* 60:337-355.
- Chapter 44: Pasture Bloat in Ruminants: Cause, Occurrence and Mitigation Strategies - Tim A. McAllister, Yuxi Wang, Walter Majak and Surya Acharya (Page 184)**
- Berg B.P., Majak W., McAllister T.A., Hall J.W., McCartney D., Coulman B.E., Goplen B.P., Acharya S.N., Tait R.M. and Cheng K-J. 2000. Bloat in cattle grazing alfalfa cultivars selected for a low initial rate of digestion: A review. *Can. J. Plant Sci.* 80, 493-502.
- Bernáldez M.L., Bisagalup D.H., Ferrer J.M., Balzarini M. and Alomar D. 2009. Bloat reduction potential of an alfalfa cultivar selected for low initial ruminal disappearance. *Crop Sci.* 49, 356-361.
- Cheng K.J., McAllister T.A., Popp J.D., Hristov A.N., Mir Z. and Shin H.T. 1998. A review of bloat in feedlot cattle. *J. Anim. Sci.* 76, 299-308.
- Coulman B., Goplen B., Majak W., McAllister T., Cheng K-J., Berg B., Hall J., McCartney D. and Acharya S. 2000. A review of the development of a bloat-reduced alfalfa cultivar. *Can. J. Plant Sci.* 80, 487-491.
- Hall J.W. and Majak W. 1989. Plant and animal factors in legume bloat. In: Cheeke, P.R. (Ed.), *Toxicants of plant origin, Vol III, Proteins and amino acids.* CRC Press, Boca Raton, FL, USA pp 93-106.
- Hall J.W. and Majak W. 1994. Evaluation of two supplements for the prevention of alfalfa bloat. *Can. Vet. J.* 35, 702-705.
- Hall J.W. and Majak W. 1995. Effect of time of grazing or cutting and feeding on the incidence of alfalfa bloat in cattle. *Can. J. Anim. Sci.* 75, 271-273.
- Hall J.W., Majak W., McAllister T.A. and Merrill J.K. 2001. Efficacy of Rumensin controlled release capsule for the control of alfalfa bloat in cattle. *Can. J. Anim. Sci.* 81, 281-283.

- Hall J.W., Majak W., van Ryswyk A.L., Howarth R.E. and Kalnin C.M. 1988. The relationship of rumen cations and soluble protein with the predisposition of cattle to alfalfa bloat. *Can. J. Anim. Sci.* 68, 431–437.
- Howarth R.E., Chaplin R.K., Cheng K.-J., Goplen B.P., Hall J.W., Hironaka R., Majak W. and Radostits O.M. 1991. Bloat in cattle. Agriculture Canada, Ottawa, ON. Publ. 1858/E. 34 pp.
- Howarth R.E., Goplen B.P., Brandt S.A. and Cheng K.-J. 1982. Disruption of leaf tissue by rumen microorganisms: an approach to breeding bloat-safe forage legumes. *Crop Sci.* 22, 564–568.
- Howarth R.E., Majak W., Waldern D.E., Brandt S.A., Fesser A.C., Goplen B.P. and Spurr D.T. 1977. Relationships between ruminant bloat and the chemical composition of alfalfa herbage. I. Nitrogen and protein fractions. *Can. J. Anim. Sci.* 57, 345–357.
- Majak W., Hall J.W. and McAllister T.A. 2001. Practical measures for reducing risk of alfalfa bloat in cattle. *J. Range Manage.* 54, 490–493.
- Majak W., Hall J.W. and McCaughey W.P. 1995. Pasture management strategies for reducing the risk of legume bloat in cattle. *J. Anim. Sci.* 73, 1493–1498.
- Majak W., Lysyk T.J., Garland G.J. and Olson M.E. 2005. Efficacy of Alfasure™ for the prevention and treatment of bloat in cattle. *Can. J. Anim. Sci.* 85, 111–113.
- Majak W., McAllister T.A., McCartney D., Stanford K. and Cheng K.-J. 2003. Bloat in cattle. Kaulbars, C. (Eds.) Alberta Agric. Food and Rural Development, Edmonton, AB. Canada pp 22–26.
- Mayland H.F., Cheeke P.R., Majak W. and Goff J.P. 2007. Forage-induced animal disorders. In: Barnes, R.F., Nelson, C.J. Moore, K.J., Collins, M. (Eds), *Forages Vol. II* 6th ed. Blackwell Publ., Ames, IA, USA pp. 687–691.
- Min B.R., Pinchak W.E., Anderson R.C., Fulford J.D. and Puchala R. 2006. Effects of condensed tannins supplementation level on weight gain and *in vitro* and *in vivo* bloat precursors in steers grazing winter wheat. *J. Anim. Sci.* 84, 2546–2554.
- Min B.R., Pinchak W.E., Fulford J.D. and Puchala R. 2005. Wheat pasture bloat dynamics, *in vitro* ruminal gas production, and potential bloat mitigation with condensed tannins. *J. Anim. Sci.* 83, 1322–1331.
- Min B.R., Pinchak W.E., Mathews D. and Fulford J.D. 2007. *In vitro* rumen fermentation and *in vivo* bloat dynamics of steers grazing winter wheat to corn oil supplementation. *Anim. Feed Sci. Technol.* 133, 192–205.
- Papadopoulos Y.A., Charmley E., McRae K.B., Farid A. and Price M.A. 2001. Addition of white clover to orchardgrass pasture improves the performance of grazing lambs but not herbage production. *Can. J. Anim. Sci.* 81, 517–523.
- Popp J.D., McCaughey W.P., Cohen R.D.H., McAllister T.A. and Majak W. 2000. Enhancing pasture productivity with alfalfa: a review. *Can. J. Plant. Sci.*, 80: 513–519.
- Ray H., Yu M., Auser P., Blahut-Beatty L., McKersie B., Bowley S., Westcott N., Coulman B., Lloyd A. and Gruber M.Y. 2003. Expression of anthocyanins and proanthocyanidins after transformation of alfalfa with maize Lc. *Plant Physiol.* 132, 1448–63.
- Rutter S.M. 2006. Diet preference for grass and legumes in free-ranging sheep and cattle: Current theory and future application. *Appl. Anim. Behav. Sci.* 97, 17–35.



- Stanford K., Wang Y., Berg B.P., Majak W., McCartney D.H., Baron V. and McAllister T.A. 2001. Effects of alcohol ethoxylate and pluronic detergents on the development of pasture bloat in cattle and sheep. *J. Dairy Sci.* 84, 167–176.
- Thompson D.J., Brooke B.M., Garland G.J., Hall J.W. and Majak W. 2000. Effect of stage of growth of alfalfa on the incidence of bloat in cattle. *Can. J. Anim. Sci.* 80, 725–727.
- Veira D.M., Lysyk T.J., Thompson D.J., Garland G.J. and Majak W. 2010. Effect of grazing mixtures of alfalfa and orchardgrass grown in strips on the incidence of bloat in cattle. *Can. J. Anim. Sci.* 90, 109–112.
- Wang Y., Berg B.P., Barbieri L.R., Veira D.M. and McAllister T.A. 2006a. Comparison of alfalfa and mixed alfalfa-sainfoin pastures for grazing cattle: Effects on incidence of bloat, ruminal fermentation, and feed intake. *Can. J. Anim. Sci.* 86, 383-392.
- Wang Y., Frutos P., Gruber M.Y., Ray H. and McAllister T.A. 2006b. In vitro ruminal digestion of anthocyanidin-containing alfalfa transformed with the maize Lc regulatory gene. *Can. J. Plant Sci.* 86, 1119-1130.
- Wang Y., Ralston B., Milligan D., Olson M.E. and McAllister T.A. 2006c. Pluronic detergent administered in drinking water: effects on ruminal fluid characteristics of steers grazing alfalfa. *Can. J. Anim. Sci.* 86, 598

**Chapter 45: Extending the Grazing Season: Swath Grazing by Beef Cows - Duane McCartney and Vern Baron (Page 189)**

- Baron V., Aasen A., Oba M., Campbell D., Salmon D., Basarab J. and Stevenson C. 2012. Swath-Grazing Potential for Small-Grain Species with a Delayed Planting Date. *Agronomy Journal* Vol.107, Issue 2, pg 393-402.
- Dick C., Baron V.S. and Aasen A. 2008. Agronomic management of swath grazed pastures. *Agri-Facts*. Alberta Agriculture and Rural Development. Edmonton, AB. Agdex 420/56-3 8 pp. *(incorrect reference in text)*
- McCartney D., Basarab J., Okine E., Baron V. and Depalme. 2004 Alternative Fall and Winter Feeding Systems for Spring-Calving Beef Cows. *Can. J. Anim. Sci.* 84:511-522.

**Chapter 46: Extending the Grazing Season: Stockpile Grazing of Perennial Forages - Duane McCartney and Vern Baron (Page 192)**

- Bailey A.W., McCartney D. and Schellenberg M. 2010. Management of Canadian Prairie Rangeland. Agriculture and Agri Food Canada, Ottawa, Ont. AAFC No. 10144.
- Bittman S., McCartney D., Horton P., Hiltz M. and Nuttall W. 2000. The influence of harvest management and fertilizer on herbage yields of cool-season grasses grown in the Aspen Parkland of northeastern Saskatchewan. *Can. J. Plant Sci.* 80: 747-753.
- Dick A.C., Baron V.S. and Aasen A. 2008. Agronomic management of stockpiled pastures. *Agri-facts*. Agdex 420/56-3 (October) 9 pp.

**Chapter 47: Stockpiling Tall Fescue for Winter Grazing by Beef Cows in Interior BC - Don Thompson and Doug Veira (Page 195)**

- Drapeau R., Belanger G., Tremblay G.F. and Michaud R. 2007. Yield, persistence, and nutritive value of autumn-harvested tall fescue. *Can. J. Plant Sci.* 87: 67-75.
- Riesterer J.L., Undersander D.J., Casler M.D. and Combs D.K. 2000. Forage yield of stockpiled perennial grasses in the upper Midwest USA. *Agron. J.* 92: 740: 747.

**Chapter 48: Non-confined Winter Feeding in Frozen Regions: Benefits and Risks - Kim Ominski, Gwen Donohoe and Don Flaten (Page 197)**

- Adams D.C., Nelson T.C., Reynolds W.L. and Knapp B.W. 1986. Winter grazing activity and forage intake of range cows in the northern great plains. *J. Anim. Sci.* 62: 1240-1246.
- Baron V.S., Dick A.C., McCartney D., Basarab J.A. and Okine E.K. 2006. Carrying capacity, utilization, and weathering of swathed whole plant Barley. *Agron. J.* 98: 714-721.
- Bernier J. 2011. Impact of cold acclimatization on nutrient utilization and enteric methane emissions of beef cows overwintered on low-quality forage diets supplemented with dried distillers grain with solubles. M.Sc. Thesis. Department of Animal Science, University of Manitoba, Winnipeg, Manitoba, Canada.
- Bernier, J. N., Undi, M., Plaizier, J. C., Wittenberg, K. M., Donohoe, G. R. and Ominski, K. H. 2012. Impact of prolonged cold exposure on dry matter intake and enteric methane emissions of beef cows overwintered on low-quality forage diets with and without supplemented wheat and corn dried distillers' grain with solubles. *Can. J. Anim. Sci.* 92: 493-500.
- Boadi D.A., Wittenberg K.M., Scott S.L., Burton D., Buckley K., Small J.A. and Ominski K.H. 2004. Effect of low and high forage diet on enteric and manure pack greenhouse gas emissions from a feedlot. *Can. J. Anim. Sci.* 84: 445-453.
- Beauchemin K.A., Janzen H.H., Little S.M., McAllister T.A. and McGinn S.M. 2010. Life cycle assessment of greenhouse gas emissions from beef production in western Canada: A case study. *Agriculture Systems.* 103: 371-379.
- Donohoe G. 2011. Nutrient excretion and soil greenhouse emission from excreta of overwintering beef cows fed forage-based diets supplemented with dried distillers' grains with solubles. M.Sc. Thesis. Department of Soil Science, University of Manitoba, Winnipeg, MB, Canada. <http://mspace.lib.umanitoba.ca/handle/1993/4349>
- Glozier N.E., Elliott J.A., Holliday B., Yarotski J. and Harker B. 2006. Water quality characteristics and trends in a small agricultural watershed: South Tobacco Creek, Manitoba, 1992-2001. Environment Canada. 86 pp.
- Jones S.K., Rees R.M., Skiba U.M. and Ball B.C. 2007. Influence of organic and mineral N fertilizer on N<sub>2</sub>O fluxes from a temperate grassland. *Agric. Ecosyst. Environ.* 121: 74-83.
- Jungnitsch P.F., Schoenau J.J., Lardner H.A. and Jefferson P.G. 2011. Winter feeding beef cattle on the western Canadian prairies: Impacts on soil nitrogen and phosphorus cycling and forage growth. *Agric. Ecosyst. Environ.* 141: 43-152.
- Karn J.F., Tanaka D.L., Liebig M.A., Ries R.E., Kronberg S.L. and Hanson J.D. 2005. An integrated approach to crop/livestock systems: Wintering beef cows on swathed crops. *Renewable Agriculture and Food Systems.* 20: 232-242.
- Kelln B.A., Lardner H.A., McKinnon J.J., Campbell J.R., Larson K. and Damiran D. 2011. Effect of winter feeding system on beef cow performance, reproductive efficiency, and system cost. *PAS.* 27: 410-421.
- Kelln B., Lardner H., Schoenau J. and King T. 2012. Effects of beef cow winter feeding systems, pen manure and compost on soil nitrogen and phosphorous amounts and distribution, soil density, and crop biomass. *Nutr Cycl Agroecosyst.* 92: 183-194.
- Klausner S.D., Zwerman P.J. and Ellis D.F. 1976. Nitrogen and phosphorus losses from winter disposal of dairy manure. *J. Environ. Qual.* 5: 47-49.

- Lenahan N.A., DeRouchey J.M., Marston T.T. and Marchin G.L. 2005. Concentrations of fecal bacteria and nutrients in soil surrounding round-bale feeding sites. *J. Anim. Sci.* 83: 1673-1679.
- Liebig M.A., Gross J.R., Kronberg S.L., Phillips R.L. and Hanson J.D. 2010. Grazing management contributions to net global warming potential: a long-term evaluation in the Northern Great Plains. *J. Environ. Qual.* 39: 799-809.
- Little J.L., Nolan S.C., Casson J.P. and Olson B.M. 2007. Relationships between soil and runoff phosphorus in small Alberta watersheds. *J. Environ. Qual.* 36: 1289-1300.
- McCartney D., Basarab J.A., Okine E.K., Baron V.S. and Depalme A.J. 2004. Alternative fall and winter feeding systems for spring calving beef cows. *Can. J. Anim. Sci.* 84: 511-522.
- Nicholaichuk W. 1967. Comparative watershed studies in southern Saskatchewan. *Trans. ASAE.* 10: 502-504.
- Ontkcan G.R., Chanasyk D.S. and Bennett D.R. 2005. Snowmelt and growing season phosphorus flux in an agricultural watershed in south-central Alberta, Canada. *Water Qual. Res. J.* 40: 402-417.
- Salomon, E. And Rodhe, L. 2011. Losses of N<sub>2</sub>O, CH<sub>4</sub> and NH<sub>3</sub> from a grass sward used for overwintering beef heifers. *Anim. Feed Sci. Tech.* 166-167: 147-154.
- Schellinger G.R. and Clausen J.C. 1992. Vegetative filter treatment of dairy barnyard runoff in cold regions. *J. Environ. Qual.* 21: 40-45.
- Sheppard S.C., Sheppard M.I., Long J., Sanipelli B. and Tait J. 2006. Runoff phosphorus retention in vegetated field margins on flat landscapes. *Can. J. Soil Sci.* 86: 871-884.
- Srinivasan M.S., Bryant R.B., Callahan M.P. and Weld J.L. 2006. Manure management and nutrient loss under winter conditions: A literature review. *J. Soil Water Cons.* 61: 200-208.
- Young R.A. and Mutchler C.K. 1976. Pollution potential of manure spread on frozen ground. *J. Environ. Qual.* 5: 174-179.
- Chapter 49: Reducing Greenhouse Gases from Ruminants on Perennial Pastures - Alan Iwaasa and Reynald Lemke (Page 201)**
- Boadi D., Wittenberg K.M. and McCaughey W.P. 2002. Effects of grain supplementation on methane production of grazing steers using the sulphur hexa fluoride (SF<sub>6</sub>) tracer gas technique. *Can. J. Anim. Sci.* 82:151-157.
- Chaves A.V., Thompson L.C., Iwaasa A.D., Scott S., Olson M.E., Benchaar C., Veira D.M. and McAllister T.A. 2006. Effect of pasture type (alfalfa vs. grass) on CH<sub>4</sub> & CO<sub>2</sub> production by yearling beef heifers. *Can. J. Anim. Sci.* 86:409-418.
- Environment Canada. 2011. National inventory report 1990-2009 Greenhouse gas sources and sinks in Canada. Published on the website <http://www.ec.gc.ca/ges-ghg/>.
- Environmental Protection Agency, U.S. 2010. Methane and nitrous oxide emissions from natural sources. Published on the website <http://www.epa.gov/methane/sources.html>.
- Kebreab E., Clark K., Wagner-Riddle C. and France J. 2006. Methane and nitrous oxide emissions from Canadian animal agriculture: A review. *Can. J. Anim. Sci.* 86:135-158.

- Lai R. 2006. Carbon dynamics in agricultural soils. Pg. 127-148 in J.S. Bhatti, R. Lal, M.J. Apps, and M.A. Price eds., *Climate Change and Managed Ecosystems*. CRC Press Taylor & Francis Group.
- McCaughey W.P., Wittenberg K. and Corrigan D. 1997. Methane production by steers on pasture. *Can. J. Anim. Sci.* 77:519-524.
- McGinn S.M., Beauchemin K.A., Iwaasa A.D. and McAllister T.A. 2006. Assessment of the sulphur hexafluoride (SF<sub>6</sub>) tracer technique for measuring enteric methane emissions from cattle. *J. Environ. Qual.* 35:1686-1691. (incorrectly noted in text as McGinn et al. 2007)
- Ominski K.H. and Wittenberg K.M. 2006. Strategies for reducing enteric methane emissions in forage-based beef production systems. Pg. 261-272, in J.S. Bhatti, R. Lal, M.J. Apps, and M.A. Price eds., *Climate Change and Managed Ecosystems*. CRC Press Taylor & Francis Group.
- Pinares-Patino C.S., Baumont R. and Martin C. 2003. Methane emissions by Charolais cows grazing a monospecific pasture of timothy at four stages of maturity. *Can. J. Anim. Sci.* 83:769-777.
- Rochette P. and Janzen H.H. 2005. Towards a revised coefficient for estimating N<sub>2</sub>O emissions from legumes. *Nutrient Cycling in Agroecosystems* 73:171-179.
- Singer J.W. and Moore K.J. 2003. Nitrogen removal by orchardgrass and smooth bromegrass and residual soil nitrate. *Crop Sci.* 43:1420-1426.
- Waghorn G.C. and Woodward S.L. 2006. Ruminant contributions to methane and global warming – A New Zealand perspective. Pg. 233-260, in J.S. Bhatti, R. Lal, M.J. Apps, and M.A. Price eds., *Climate Change and Managed Ecosystems*. CRC Press Taylor & Francis Group.
- Yamulki S., Jarvis S.C. and Owen P. 1999. Methane emission and uptake from soils as influenced by excreta deposition from grazing animals. *J. Environmental Quality* 28:676-682
- Zemenchik R.A. and Albrecht K.A. 2002. Nitrogen use efficiency and apparent nitrogen recovery of Kentucky bluegrass, smooth bromegrass, and orchardgrass. *Agron. J.* 94:421-428.

**Chapter 50: High Forage Diets Improve Quality of Beef for Consumers - Priya Mir (page 205)**

- Margetak C., Travis G., Entz T., Mir P., Wei S and Dodson M.V. 2012. Fatty acid composition of phospholipids and in the central and external positions of triacylglycerol in muscle and subcutaneous fat of beef steers fed diets supplemented with oil containing n6 and n3 fatty acids while undergoing one of three 48 h feed withdrawal treatments, *J Lipids* (in press).